

## Model# 1177-DA

### Two Handle Shelf Back Lavatory Faucet

#### FEATURES & SPECIFICATIONS

- Canopy Handles
- Replaceable Seats
- 3-Hole 4" to 6" Installation
- Brass Pop-Up Drain Assembly

#### FINISHES

- PC Polished Chrome

#### STANDARDS

- ASME A112.18.1
- ANSI / NSF 61, SECTION 9
- CUPC / IAPMO LISTED
- ANSI A117.1 / ADA COMPLIANT



#### FLOW

- 1.2 GPM Flow Rate
- E0.5 - 0.5 GPM Flow Rate Aerator Available Upon Request

#### WARRANTY

- Lifetime Limited Warranty
- Lifetime Residential Warranty
- 5 Year Commercial Warranty

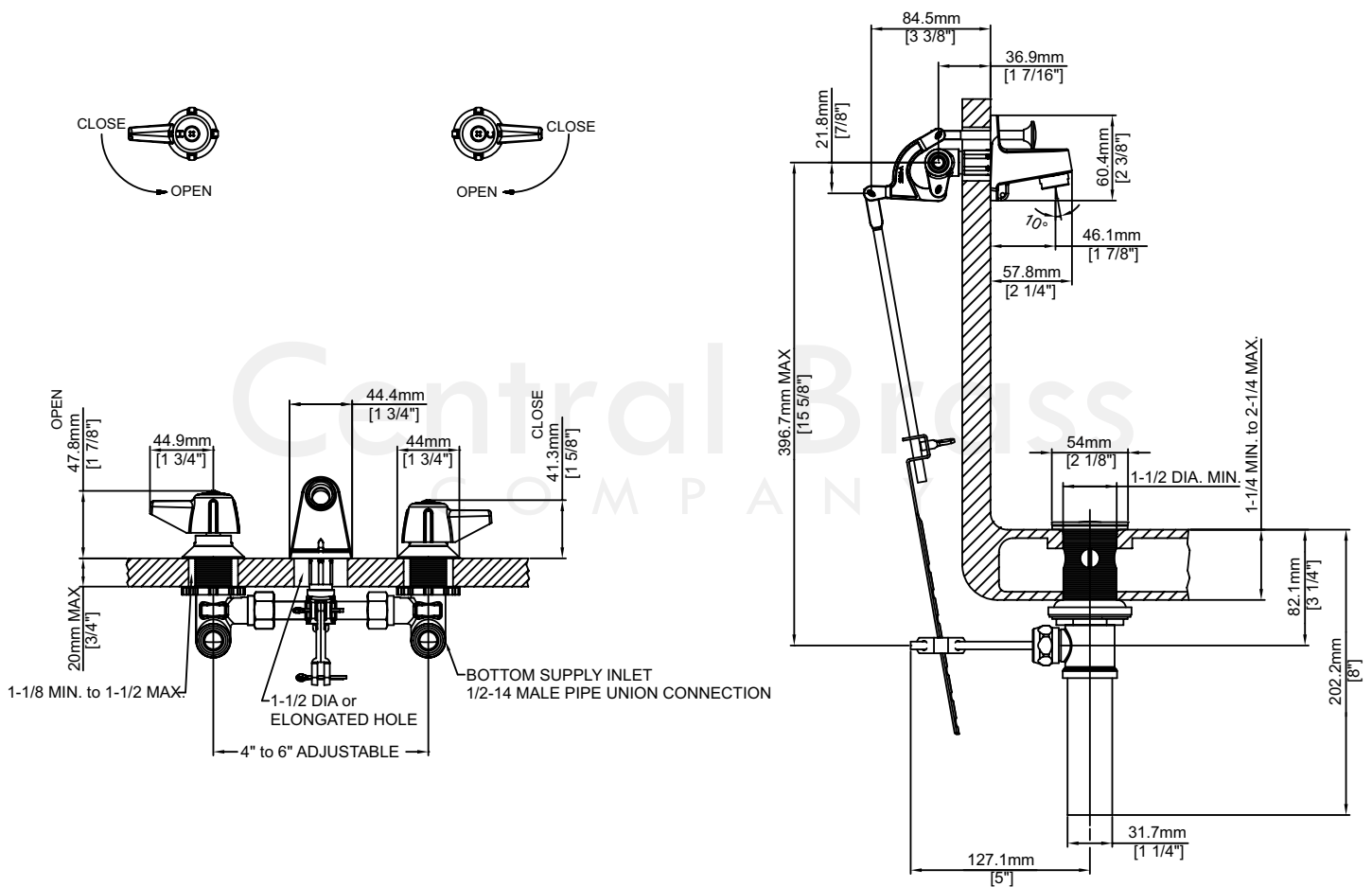
1177-DA/REV. 11 2017

Product Specifications subject to change without notice

Job Name \_\_\_\_\_ Date \_\_\_\_\_  
Model Specified \_\_\_\_\_ QTY \_\_\_\_\_  
Customer/Wholesaler \_\_\_\_\_  
Contractor \_\_\_\_\_  
Architect/Engineer \_\_\_\_\_  
Submitted as Shown \_\_\_\_\_  
Submitted w/ Variations \_\_\_\_\_

## Model# 1177-DA

### Two Handle Shelf Back Lavatory Faucet



1177-DA/REV. 11 2017

Product Specifications subject to change without notice