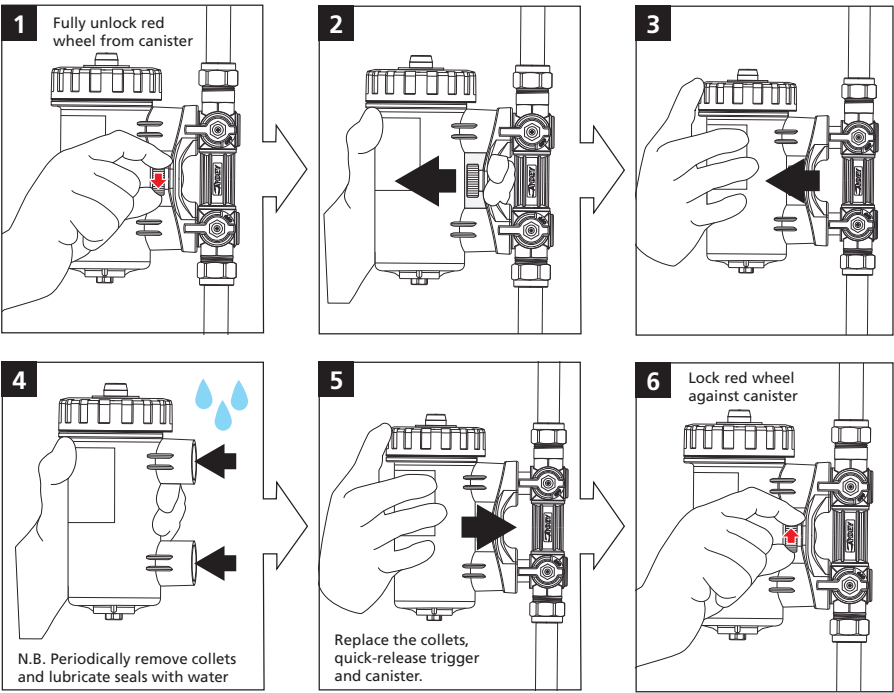


Quick-release trigger

MagnaClean® Professional2 incorporates a secure, quick-release, trigger which enables the filter to be removed and re-installed in seconds.

The industry leading connections are an integral part of the new MagnaClean Professional2 design. They enable easy and speedy filter removal during annual servicing or to undertake a MagnaCleanse system flush. This also makes it ideal for systems where there is little room to install a filter.





The following instructions are designed to support engineers in the safe and effective servicing of MagnaClean Professional2 using the quick-release trigger.



FOR BEST RESULTS
Install and service with MC1+ Protector, the advanced system inhibitor from ADEY, the industry leader in heating system maintenance and water treatment.

Maximum working pressure: 87 psi
Maximum working temperature: 203°F
Flow rate: Recommended rate for optimum capture up to 13 gallons per minute
Connection: 3/4" copper compression for copper pipework with 3/4" FTG to 1" NPT female adapters for black iron pipework

CAUTION:

-  MagnaClean filter contains a strong magnet. Keep away from all electrical devices, bank cards and other magnetic devices.
-  MagnaClean filter contains a strong magnet. Caution should be taken at all times when handling if you have a pacemaker fitted.
-  MagnaClean filter is a pressurized device. Always release pressure before servicing.
-  Unit may be hot in operation. Handle with care.



Toll free: 844 378 0442 | Office: 412 406 8292 | Email: info@adeyusa.com
adeyusa.com

MagnaClean® Professional 2

Installation and servicing instructions



M08613 LF2-01-02596

Installation

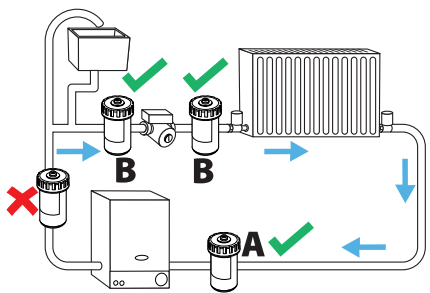
MagnaClean® Professional2 has been developed by the industry leading and multi-award winning company that pioneered magnetic filtration. ADEY's filters protect over three million heating systems throughout Europe removing virtually 100% of the damaging suspended black iron oxide sludge that builds up in all hydronic heating systems.

The dual-action filter can be installed anywhere on the main circuit. However, to achieve the best level of protection for the boiler or baseboard, it is recommended that *MagnaClean Professional2* is fitted after the last radiator and before the boiler.

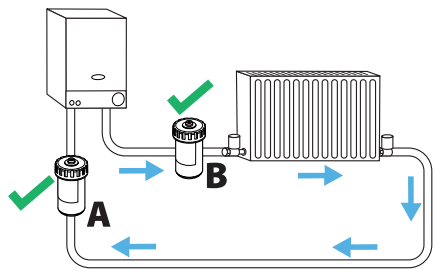
In determining a suitable location, it is important to allow adequate access for servicing.

The following instructions are designed to support engineers in the safe and effective installation and servicing of *MagnaClean Professional2* and should be followed at all times.

Any queries should be directed to ADEY on: **844 378 0442**



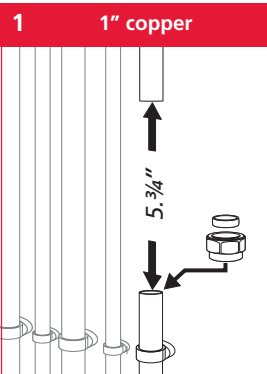
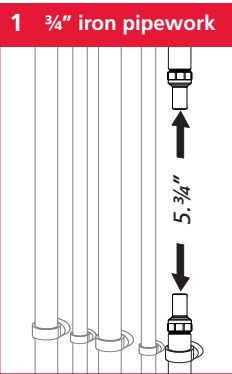
Open vented system



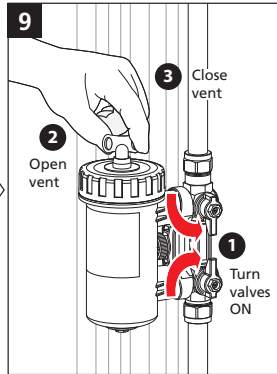
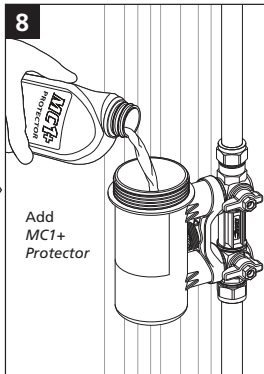
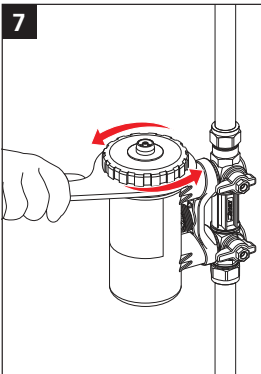
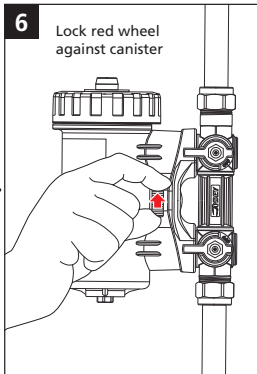
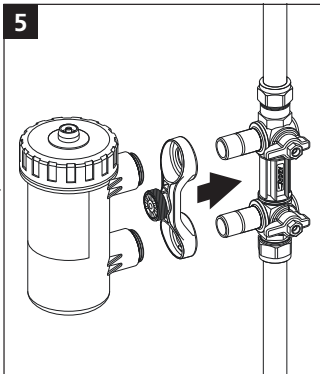
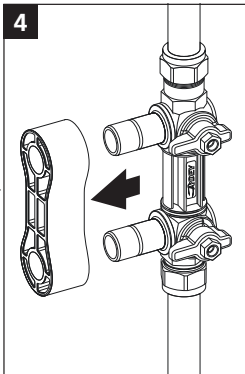
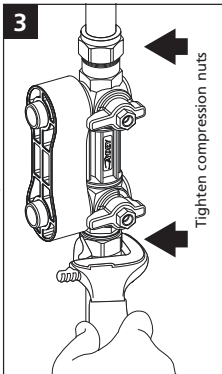
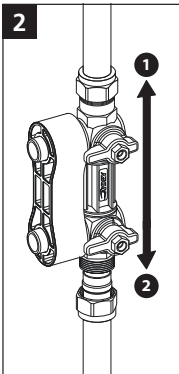
Tankless/Sealed system

In both diagrams, position **A** is best practice, while **B** is suitable.

Note: We firmly recommend *MagnaClean Professional2* is installed and serviced by a qualified heating engineer.



OR



Servicing

Your system is protected by
MagnaClean® Professional 2
Annual service required
adeyusa.com

