



# Product Catalog

2022



PUMPS | SWITCHES  
DRAIN PANS | TREATMENTS





Providing best-in-class HVAC/R service and support is what you do, and relying on dependable product solutions is critical to getting the job done right — and to your customer's satisfaction. We understand that preventing water damage due to condensate overflow is a top concern, made even more challenging with the variety of installation situations and the ongoing need for maintenance to keep the condensate system clear from blockages.

Meet Asurity™ — a DiversiTech® brand of condensate management products that provide a complete system of pumps, switches, drain pans, and treatments supported by highly trained technical support when you need it. At Asurity, we do more than create complete system solutions, we create peace of mind.

6-3060S	Drain Pan, Plastic 30x60 S 5PK	EA	5	27
6-3263L	Drain Pan, Plastic 32x63 L 5PK	EA	5	27
6-3263L-F	Drain Pan, Plastic, Flex 32x63 L 5PK	EA	5	27
6-3636L	Drain Pan, Plastic 36x36 L 5PK	EA	5	27
6-3660L	Drain Pan, Plastic 36x60 L 5PK	EA	5	27
6-3660S	Drain Pan, Plastic 36x60 S 5PK	EA	5	27
6-HK2748	High Rise Drain Pan, 27x48 w/Kit, 5PK	EA	5	27
6-HK2748-1	High Rise Drain Pan, 27x48 w/Kit, 1PK	EA	1	27
6-HK2766	High Rise Drain Pan, 27x66 w/Kit, 5PK	EA	5	27
6-HK2766-1	High Rise Drain Pan, 27x66 w/Kit, 1PK	EA	1	27
6-HK3050	High Rise Drain Pan, 30x50 w/Kit, 5PK	EA	5	27
6-HK3050-1	High Rise Drain Pan, 30x50, w/Kit, 1PK	EA	1	27
6-HK3050HD	Heavy Duty High Rise Pan, 30x50, w/Kit, 5PK	EA	5	27
6-HK3060	High Rise Drain Pan, 30x60, w/Kit 5PK	EA	5	27
6-HK3060-1	High Rise Drain Pan, 30x60, w/Kit 1PK	EA	1	27
6-HK3060HD	Heavy Duty High Rise Pan, 30x60, w/Kit, 5PK	EA	5	27
6-HK3070HD	Heavy Duty High Rise Pan, 30x70, w/Kit, 5PK	EA	5	27
6-HK3364FUR	Drain Pan, Furnace, 33x64, w/Kit	EA	5	27
6-HK3378FUR	Drain Pan, Furnace, 33x78, w/Kit	EA	5	27
6-M2748	Drain Pan, Metal, 27x48, 5PK	EA	5	27
6-M2763	Drain Pan, Metal, 27x63, 5PK	EA	5	27
6-M3030	Drain Pan, Metal, 30x30, 5PK	EA	5	27
6-M3050	Drain Pan, Metal, 30x50, 5PK	EA	5	27
6-M3060	Drain Pan, Metal, 30x60, 5PK	EA	5	27
6-M3263	Drain Pan, Metal, 32x63, 5PK	EA	5	27
230-DPPL	Mini-Split Plastic Drain Pan, Wall Mount	EA	1	27
230-DPPM	Mini-Split Plastic Drain Pan, Hanging	EA	1	27
CP-PAN	Condensate Pump Pan, Plastic	EA	24	27
<b>Treatments</b>				
CNH-4K	Horizontal Condensate Neutralizer	EA	1	32
CNHH-4K	Horizontal Condensate Neutralizer Kit	EA	1	32
CNM-3M	Neutralizing Media, for Tank	EA	1	33
CNM-4K	Neutralizing Media, for Cartridge	EA	1	33
CNM-BULK	Neutralizing Media, Bulk	EA	1	33
CNT-3M	Neutralization Tank	EA	1	33
CNV-4K	Vertical Condensate Neutralizer	EA	1	33
FLOW-PLUS-10	Flow-Plus®, Medium Tonnage	EA	18	30
FLOW-PLUS-125	Flow-Plus®, High Tonnage	EA	8	30
FLOW-PLUS-200	Flow-Plus®, 200 Mini Tabs	EA	4	30
FLOW-PLUS-25	Flow-Plus®, 25 Mini Tabs	EA	12	30
FLOW-PLUS-6	Flow-Plus®, Light Tonnage	EA	12	30
FLOW-PLUS-CP	Flow-Plus® Pump Treatment Tablets	EA	36	30
PROTREAT-151	Pro-Treat® 151, 100 Tab/Jar	EA	12	30
PROTREAT-152	Pro-Treat® 152, 12 Tab/Jar	EA	6	30
PROTREAT-161	Pro-Treat® 161, 100 Tab/Jar	EA	12	30
PROTREAT-200	Pro-Treat® 200, 200 Tab/Jar	EA	1	30
PROTREAT-217	Pro-Treat® 217, 200 Tab/Jar	EA	12	30
PROTREAT-350	Pro-Treat® 350, 100 Tab/Jar	EA	24	30
PTLG-100	Pro-Treat® Line Guard, 100' Rope, 1/4" Thick	EA	27	30
PS-01	Pro-Treat® Strip, 1-2T	PK	1	31
PS-03	Pro-Treat® Strip, 3-5T	PK	1	31
PS-07	Pro-Treat® Strip, 7-12T	PK	1	31
PS-20	Pro-Treat® Strip, 20-25T	PK	1	31
PS-40	Pro-Treat® Strip, 40-50T	PK	1	31
SCM-185-8	Flow Plus® Polymer Pan Treatment	EA	1	30



©2022 DiversiTech® Corporation  
Asurity™ is a registered trademark of DiversiTech Corporation.  
[www.asurityhvacr.com](http://www.asurityhvacr.com)

LIT-CAT-ASURITY



# Table of Contents

Asurity™ System	4
The Asurity Promise	6
Selecting the Right System	7
<hr/>	
Pumps	8
Switches	18
Installation Components	22
Drain Pans	24
Treatments	28
<hr/>	
Product Listing	34



**YOUR COMPLETE SYSTEM FOR  
CONDENSATE MANAGEMENT**



**Getting the job done isn't enough.  
It needs to be done right.**

We get that. That's why Asurity™ products are part of a complete system of condensate management solutions designed to work together. Why piece a system together when Asurity offers everything you need to install a superior condensate management solution for your customer?

We offer a full range of pumps from standard, high-temperature, flow, or lift applications in standard height and low-profile configurations. Our switches complement our range of pumps. Whether installed in a primary pan, secondary pan, inline, or for flood detection, we have a switch to meet the needs of your installation. Secondary drain pans are a critical component of an installation, providing additional peace of mind if the primary pan overflows, water damage won't occur. The Asurity line offers a full range of metal, plastic, and specialty drain pans. Our full range is complete with treatments to neutralize acid condensate, and pan strips and tablets to keep the system free from blockages.

---

[asurityhvacr.com](http://asurityhvacr.com)



# The Asurity™ Promise

## Tired of callbacks from water damage?

That's why we make it easy to protect your customers and your reputation with added protection on your condensate management install and coverage against water damage. Receive 2 years of protection for water damage claims up to \$2,500 when you install an Asurity system following our guidelines. And for unbeatable protection, choose our 4-year extended coverage when you add a 3-year maintenance agreement for protection from water damage claims up to \$2,500. Register your Asurity products on the Asurity App for easy access to protection details for each install.

For full coverage details visit  
[asurityhvacr.com/promise](http://asurityhvacr.com/promise)

### ADDED PROTECTION WHEN YOU REGISTER YOUR INSTALL



**Up to \$2500**

coverage against water damage claims



**Extended Warranty**

with 3-year maintenance agreement

# Helping You Select the Right Condensate Management System

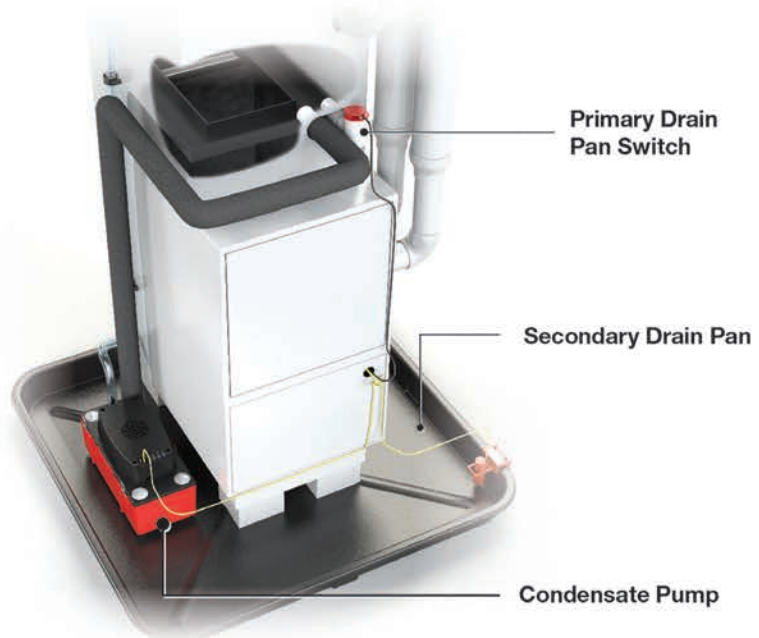
We make condensate management easy with useful resources at your fingertips. We offer quality products, and helpful resources to answer your questions. Understanding how to optimally install a condensate management system with proper checks and balances is made even easier with descriptive infographics. You will find that our website and Technical Support Team are valuable resources.

Water damage is a key homeowner worry. Why chance it?

[asurityhvacr.com](http://asurityhvacr.com)



## Vertical Installation with Furnace and Condensate Pump



### Techs Helping Techs

We take our responsibility to answer your questions seriously, which is why we have trained HVAC/R technicians providing you support. Techs who have dealt with the real-life situations that you deal with every day are here to help you every step of the way whether it be helping select the right product, answering installation questions, or troubleshooting.

For Technical Support: (800) 995-2222





# Condensate Pumps

Pumps are often the heart of a complete condensate management system. With simple installation, high durability, and long-term reliability, they effortlessly pump water wherever it needs to go. Every pump is designed to help you get the job done right, regardless of the application.

## Ultra

Pumps with extra features, adding even more condensate performance and protection.



Condensate Pump  
ULTRACP-22



### Condensate Pump Ultra Standard Applications

#### FEATURES:

- Translucent Tank for Easy & Fast Inspection
- Removable Check Valve for Easy Cleaning
- LED Indicators Confirm Pump Status
- Built-in Safety Overflow Switch
- Handles Condensate up to 160° F

ULTRACP-22

120 VAC 60 Hz

22' LIFT

ULTRACP-22-230

230 VAC 60 Hz

22' LIFT



**Includes**  
20' Clear Vinyl 3/8" Tubing

## Condensate Pump Ultra Standard Applications

### FEATURES:

- Translucent Tank for Easy & Fast Inspection
- Removable Check Valve for Easy Cleaning
- LED Indicators Confirm Pump Status
- Built-in Safety Overflow Switch
- Handles Condensate up to 160° F

**ULTRACP-22T**

**120 VAC 60 Hz**

**22' LIFT**

**ULTRACP-22T-230**

**230 VAC 60 Hz**

**22' LIFT**



## Specialty

Pumps designed to meet specific application needs.



Condensate Pump Specialty  
FP-22



### Condensate Pump Specialty Acidic & High Temperature Applications

**FEATURES:**

- Handles Acidic and Non-Acidic Condensate up to 190° F
- Stationary PVC Pipe Inlets for Easy Tank Access
- LED Indicators Confirm Pump Status
- Built-In Safety Overflow Switch
- Remove Check Valve Without Tools for Easy Cleaning

FP-22	120 VAC 60 Hz	22' LIFT
FP-22-230	230 VAC 60 Hz	22' LIFT



## Condensate Pump Specialty

### ClearVue™ Pump

#### FEATURES:

- Translucent Tank for Easy & Fast Inspection
- Variable Speed for Quieter Operation
- Senses Clog & Engages Pulse Mode for Cleaning
- Built-In Safety Overflow Switch with Alarm & Run Contacts
- LED Indicators & Audible Alarm Confirm Pump Status
- Floatless Sensor Technology

**IQP-120**

**120 VAC 60 Hz**

**22' LIFT**



#### Includes

20' Clear Vinyl 3/8" Tubing

## Condensate Pump Specialty

### ClearVue™ Pump

#### FEATURES:

- Translucent Tank for Easy & Fast Inspection
- Variable Speed for Quieter Operation
- Senses Clog & Engages Pulse Mode for Cleaning
- Built-In Safety Overflow Switch with Alarm & Run Contacts
- LED Indicators & Audible Alarm Confirm Pump Status
- Floatless Sensor Technology

**IQP-120T**

**120 VAC 60 Hz**

**22' LIFT**



## Condensate Pump Specialty

### Standard Applications

#### FEATURES:

- Reduced Height for Restricted Spaces
- LED Indicators Confirm Pump Status
- Built-in Safety Overflow Switch
- Handles Condensate up to 160° F
- Sturdy Metal Hang Tabs

**CP-22LP**

**120 VAC 60 Hz**

**22' LIFT**

**CP-22LP-230**

**230 VAC 60 Hz**

**22' LIFT**



## Condensate Pump Specialty

**Plenum Rated**

### Standard Applications

#### FEATURES:

- Reduced Height for Restricted Spaces
- LED Indicators Confirm Pump Status
- Built-in Safety Overflow Switch
- Handles Condensate up to 160° F
- Sturdy Metal Hang Tabs

**CP-22LP-P**

**120 VAC 60 Hz**

**22' LIFT**

**CP-22LP-230-P**

**230 VAC 60 Hz**

**22' LIFT**

## Pro

Pumps that effectively and reliably get the job done.



Condensate Pump Pro  
PROCP-16



### Condensate Pump Pro Standard Applications

**FEATURES:**

- Handles Condensate up to 160° F
- Sturdy Metal Hang Tabs

PROCP-16	120 VAC 60 Hz	16' LIFT
PROCP-16-230	230 VAC 60 Hz	16' LIFT



## Condensate Pump Pro Standard Applications

### FEATURES:

- Handles Condensate up to 160° F
- Built-in Safety Overflow Switch
- Sturdy Metal Hang Tabs

PROCP-22S	120 VAC 60 Hz	22' LIFT
PROCP-22S-230	230 VAC 60 Hz	22' LIFT



**Includes**  
20' Clear Vinyl 3/8" Tubing

## Condensate Pump Pro Standard Applications

### FEATURES:

- Handles Condensate up to 160° F
- Built-in Safety Overflow Switch
- Sturdy Metal Hang Tabs

PROCP-22ST	120 VAC 60 Hz	22' LIFT
PROCP-22ST-230	230 VAC 60 Hz	22' LIFT

## Condensate Pump Pro Acidic, Max Temperature & High Lift/Flow Applications

### FEATURES:

- Handles Acidic and Non-Acidic Condensate up to 212° F
- Large 1-Gallon Tank Instantly Reduces Temperature of Boiler & Steam Humidifier Discharge
- Flow Rate up to 190 Gallons Per Hour
- Quarter-Turn Removable Check Valve
- Built-In Safety Overflow Switch



PROCP-46	120 VAC 60 Hz	49' LIFT
PROCP-46-230	230 VAC 60 Hz	49' LIFT

## Ductless

A variety of convenient and long-lasting ductless pumps designed for a wide variety of applications.



### Condensate Pump Ductless Standard Applications

#### FEATURES:

- Quiet Operation (20.2 Decibels)
- Suction Lift 6.5'
- For Equipment up to 36K BTU/h
- Built-in Safety Overflow Switch with Alarm & Run Contacts
- For Wall Mounts & Ceiling Cassettes
- Includes Installation Accessories

CP-M115

115 VAC 60 Hz

24' LIFT

CP-M230

230 VAC 60 Hz

24' LIFT



### Condensate Pump Ductless Standard Applications

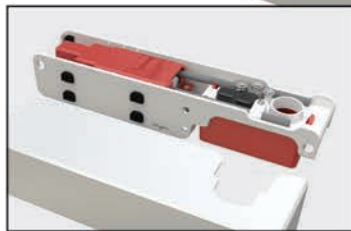
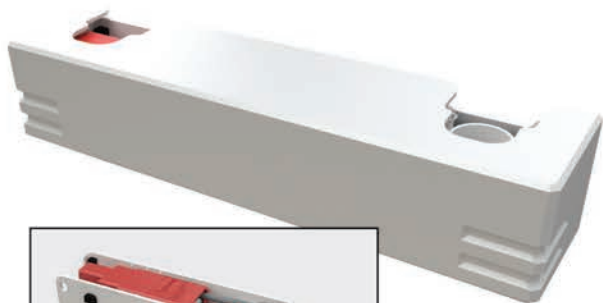
#### FEATURES:

- Variable Speed for Silent Operation (19.0 Decibels)
- Suction Lift 6.5'
- For Equipment up to 120K BTU/h
- Built-in Safety Overflow Switch with Alarm & Run Contacts
- LED Indicators Confirm Pump Status
- Includes Installation Accessories
- Floatless Sensor Technology

CVMINI

120 - 240 VAC 60 Hz

35' LIFT



## QuietMini-M Standard Applications

### FEATURES:

- Undermount Pump for Ductless System
- Ultra Quiet (21dBA)
- Removable Reservoir for Easy Maintenance
- Built-in Safety Overflow Switch
- Max Unit Output 54,000 BTU/h, 16kW

QUIETMINI-M

115 - 230 VAC 60 Hz

26' LIFT





Plenum Rated

# DUAL VOLTAGE Wet Switch® Flood Detector

MODEL NO. WS-2DV

Wet Switch® is a registered trademark of DiversiTech Corp.



SEE USER GUIDE FOR WARNINGS

1021

**POWER ON**



**MOISTURE**

**POWER IN**

**RED (+)**  
**BLACK (-)**

12-30VAC 50/60HZ 1.5W MAX  
OR 12VDC --- 1.5W MAX



**CONTACTS**

- BLUE
- WHITE
- GREEN
- BROWN
- GRAY
- YELLOW

CLASS II  
CIRCUIT  
240V  
50/60HZ  
3A MAX

**PUSH TO TEST**

**PUSH TO RESET**



Intertek  
3146992  
CONFORMS TO UL STD  
ANSI/UL 508, UL STD 61010-1



ETL CLASSIFIED  
Intertek  
3146992  
CONFORMS TO UL STD 2043

# Switches

Our switches are the brains of the operation. Designed to detect problems and shut the entire system off in case of water overflow or a clog in the condensate drain line, our switches add another layer of protection.

# Switches

- Flood Switch
- Inline Switches
- Primary Drain Pan Switches
- Secondary Drain Pan Switches



## Wet Switch® Flood Detector and Dual Voltage Flood Detector

### FEATURES:

- Turns Off with as Few as 1-2 Drops of Water Detection
- LED Indicators
- Connect Multiple Switches to Expand Protection Area
- Flexible Placement Options

### WS-2DV SPECIFIC FEATURES:

- 12 Volt: Integrates into Building Automation Systems and Transmits Alarm Signal with as Few as 1-2 Drops of Water Detection
- 24 Volt: Works with All HVAC Systems

WS-1	Plenum Rated	<span style="color: yellow;">■</span>	<span style="color: red;">■</span>
WS-2DV	Plenum Rated	<span style="color: yellow;">■</span>	<span style="color: red;">■</span>



## Condensate Safety Overflow Switch

### FEATURES:

- LED Illuminates When Condensate Line is Blocked
- Built-In Protection Against Power Surges Provides Increased Reliability
- Three Installation Configurations for Increased Flexibility
- For Standard & Plenum Rated Installations in Primary or Auxiliary Lines

CS-1	Plenum Rated	<span style="color: blue;">■</span>	<span style="color: green;">■</span>
CS-1-BULK50	Plenum Rated	<span style="color: blue;">■</span>	<span style="color: green;">■</span>

For large installs, available in a Bulk Pack of 50



## Condensate Safety Overflow Switch

### FEATURES:

- LED Illuminates When Condensate Line is Blocked
- Built-In Protection Against Power Surges Provides Increased Reliability
- For Standard & Plenum Rated Installations in Auxiliary Lines

CS-2	Plenum Rated	<span style="color: green;">■</span>
CS-2-BULK50	Plenum Rated	<span style="color: green;">■</span>

For large installs, available in a Bulk Pack of 50



## Condensate Safety Overflow Switch

### FEATURES:

- Adjustable Activation Height
- Position Anywhere Along the Drain Pan
- For Standard Rated Installations in Primary or Secondary Drain Pans

CS-3

Plenum Rated

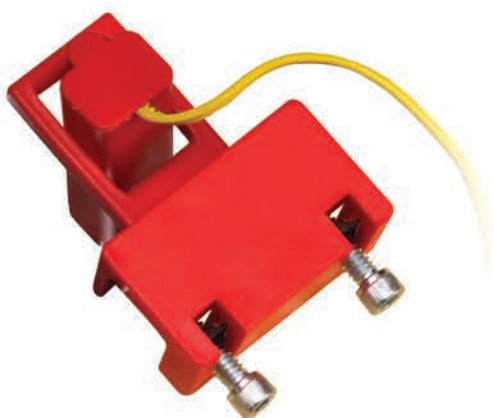


CS-3-BULK50

Plenum Rated



For large installs, available in a Bulk Pack of 50



## Condensate Safety Overflow Switch

### FEATURES:

- Position Anywhere Along Drain Pan
- Adjustable Activation Height - Minimum 1.5"
- Sensor Assembly Swivels to Accommodate Drain Pans with Sloped Sides
- Clamps Easily Over the Edge of All Drain Pan Types, Including Formed Plastic and Galvanized Sheet Metal

CC-1



## Condensate Safety Overflow Switch

### FEATURES:

- Position Anywhere Along Drain Pan
- Clamps Easily Over the Edge of All Secondary Drain Pans
- Rotate Housing to Adjust to Pan Angle
- Translucent Design for Easy & Fast Inspection
- LED Indicator Illuminates when Switch is Activated
- For Standard Rated Installations in Secondary Drain Pans

CS1200



## Condensate Safety Overflow Switch

### FEATURES:

- Fits Over 3/4" Standard Plastic Pipe without Cutting Drain Line
- Float Free Design, Ideal for Drier Environments
- Switch Orientation Adjusts Sensitivity
- Includes Easy to Attach Primary Drain Pan Fitting
- For Standard Rated Installations in Primary or Auxiliary Lines

SOS-1





U Trap



Cleaning Brush



Float Switch



### Waterless Trap

#### FEATURES:

- Prevents Unwanted Air Leakage from Condensate Line
- Will Not Freeze or Dry Out
- Eliminates Sludge Buildup
- For Negative Pressure Applications

WTRAP



### A/C Easy Tee & Service Tool

Flexible & Cost Effective  
Condensate Line Maintenance

#### FEATURES:

- Quickly Clear Condensate Lines
- Never Cut Condensate Lines Again
- Complies with Code 307.2.5

ET75 A/C Easy Tee Cleanout Port

ST75 A/C Easy Tee Service Tool Set



### Universal Alarm

#### FEATURES:

- Works with Asurity Float and Safety Switches on 24 VAC Control Circuits
- Two Wire Connections for Easy Hook Up
- Low Voltage Alarm

UA-1



### Drain Trap Kit

#### U Trap

#### FEATURES:

- Easy Installation and Troubleshooting
- Schedule 40 PVC Fittings
- Cleanout Tee
- Fits 3/4" PVC; 1" Drop

DTK113



## Drain Trap Kit U Trap, Cleaning Brush

### FEATURES:

- Easy Installation and Troubleshooting
- Schedule 40 PVC Fittings
- Cleanout Tee
- Fits 3/4" PVC; 1" Drop

DTK113B



## Drain Trap Kit With Safety Overflow Switch Deep U Trap, Cleaning Brush, Float Switch

### FEATURES:

- Easy Installation and Troubleshooting
- Schedule 40 PVC Fittings
- Cleanout Tee
- Fits 3/4" PVC; 3" Drop

DTK205

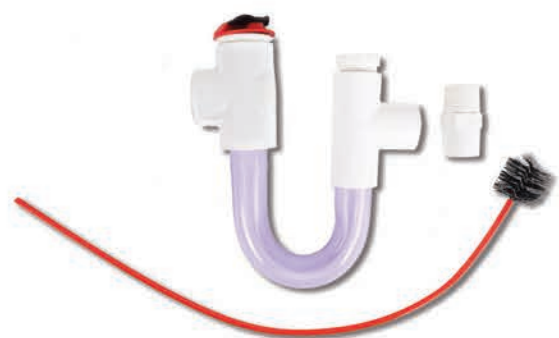


## Drain Trap Kit With Safety Overflow Switch U Trap, Cleaning Brush, Float Switch, Cross

### FEATURES:

- Easy Installation and Troubleshooting
- Schedule 40 PVC Fittings
- Cleanout Tee
- Fits 3/4" PVC; 1" Drop

DTK207



## Drain Trap Kit With Safety Overflow Switch U Trap, Cleaning Brush, Float Switch

### FEATURES:

- Easy Installation and Troubleshooting
- Schedule 40 PVC Fittings
- Cleanout Tee
- Fits 3/4" PVC; 1" Drop

DTK210



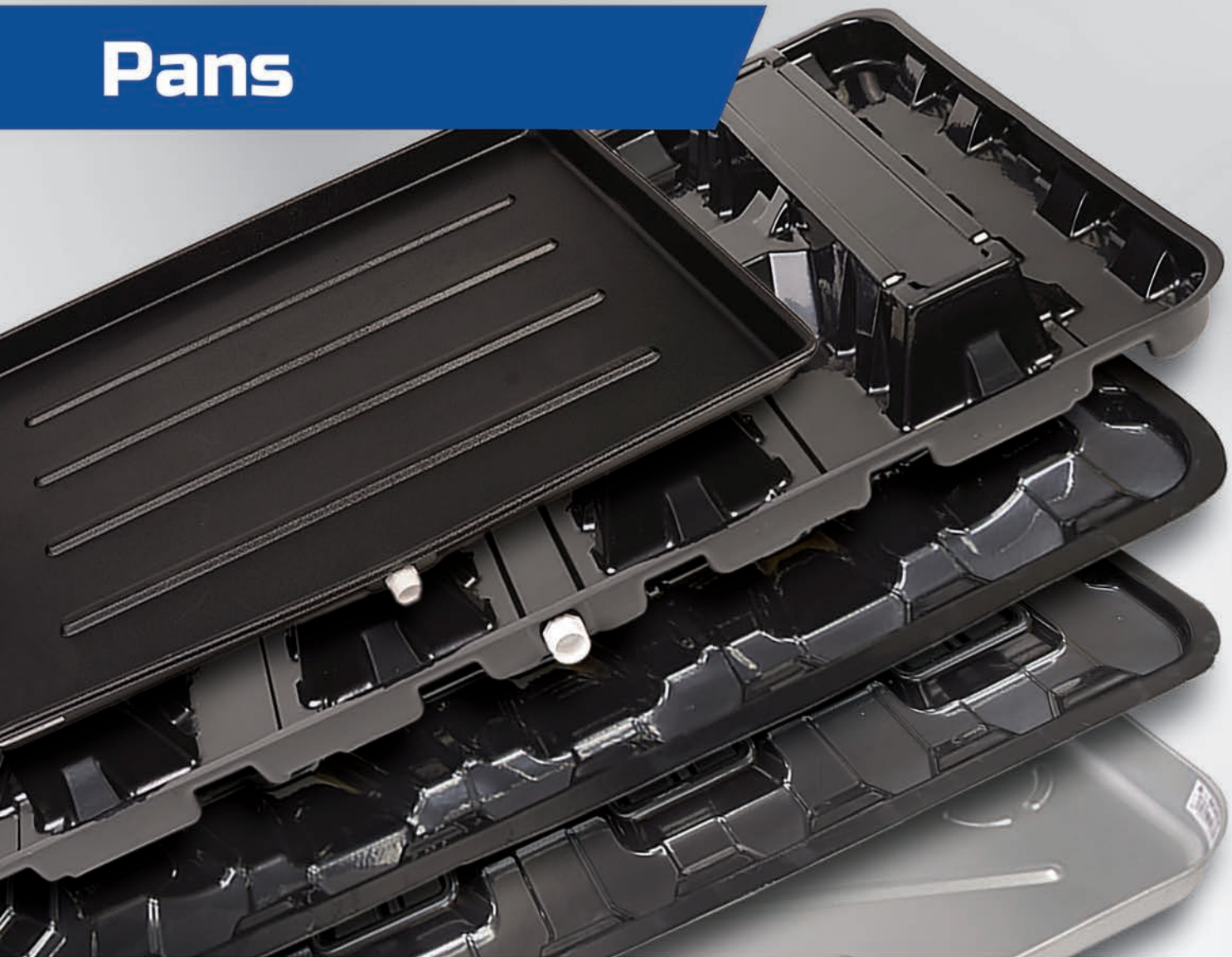




## Drain Pans

Our drain pans are engineered to provide that extra level of confidence. We offer standard plastic and metal pans made with rolled edges for durability, ribbed bottoms for rigidity, and reinforced corners for strength; while our specialty high rise drain pans feature risers for additional height. These drain pans are the backbone of our complete condensate system.

# Pans



## Plastic Drain Pan

- Rolled Edges, Ribbed Bottom, Reinforced Corners
- PVC Fittings Included
- No Seams, No Rust, No Leakage

Complies with Southern Building Code

	OUTLET	BOTTOM DIMS.
6-1838L	Long Side	18" x 38"
6-1838S	Short Side	18" x 38"
6-2424L	Long Side	24" x 24"
6-2626L	Long Side	26" x 26"
6-2739L	Long Side	27" x 39"
6-2748L	Long Side	27" x 48"
6-2763L	Long Side	27" x 63"
6-3030L	Long Side	30" x 30"
6-3050L	Long Side	30" x 50"
6-3060L	Long Side	30" x 60"
6-3060S	Short Side	30" x 60"
6-3263L	Long Side	32" x 63"
6-3263L-F	Long Side	32" x 63"
6-3636L	Long Side	36" x 36"
6-3660L	Long Side	36" x 60"
6-3660S	Short Side	36" x 60"

		OUTLET	BOTTOM DIMS.
<b>High Rise Pan™</b> <ul style="list-style-type: none"> <li>• Position AV Pads Where You Want Them</li> <li>• Full 5" Rise from Bottom of Pan</li> <li>• Heavy Reinforcement Throughout</li> <li>• Water Flows Towards Sides</li> <li>• Installation Kit Provided (Condensate Safety Overflow Switch, Anti-Vibration Pads, Fitting)</li> </ul>	6-HK2748	Long Side	27" x 48"
	6-HK2748-1	Long Side	27" x 48"
	6-HK2766	Long Side	27" x 66"
	6-HK2766-1	Long Side	27" x 66"
	6-HK3050	Long Side	30" x 50"
	6-HK3050-1	Long Side	30" x 50"
	6-HK3060	Long Side	30" x 60"
	6-HK3060-1	Long Side	30" x 60"

Meets Requirements for Florida Building Code (307.23 Auxiliary and Secondary Drain Systems)

<b>Heavy Duty High Rise Pan™</b> <ul style="list-style-type: none"> <li>• Full 4.25" Rise from Bottom of Pan</li> <li>• Heavy Reinforcement Throughout</li> <li>• Suitable for Hanging Applications</li> <li>• Water Flows Towards Sides</li> <li>• Installation Kit Provided (Condensate Safety Overflow Switch, Anti-Vibration Pads, Fitting)</li> </ul>	6-HK3050HD	Long Side	30" x 50"
	6-HK3060HD	Long Side	30" x 60"
	6-HK3070HD	Long Side	30" x 70"

<b>Furnace Pan</b> <ul style="list-style-type: none"> <li>• Heavy Duty Construction</li> <li>• Installation Kit Provided (Condensate Safety Overflow Switch, Heat Pump Risers, Fitting)</li> </ul>	6-HK3364FUR	Long Side	33" x 64"
	6-HK3378FUR	Long Side	33" x 78"

<b>Seamless Metal Drain Pan</b> <ul style="list-style-type: none"> <li>• Single-Piece Design</li> <li>• Rolled Edge</li> <li>• Two Outlets</li> <li>• Fittings Included</li> </ul>	6-M2748	Long and Short Side	27" x 48"
	6-M2763	Long and Short Side	27" x 63"
	6-M3030	Long and Short Side	30" x 30"
	6-M3050	Long and Short Side	30" x 50"
	6-M3060	Long and Short Side	30" x 60"
	6-M3263	Long and Short Side	32" x 63"

## Specialty Plastic Drain Pans

### Mini-Split Systems

- UV-stabilized and Reinforced Polypropylene
- Powder-coated Steel
- Comes with Mounting Hardware and Drain Pan Outlet

230-DPPL	Wall-mount	16.75" x 38"
230-DPPM	Hanging	16.75" x 32.25"

### Condensate Pump Pan

- Provides Redundant Protection from Water Overflows
- Fits Condensate Pump with CS-3 Switch
- No Seams, No Rust, No Leakage

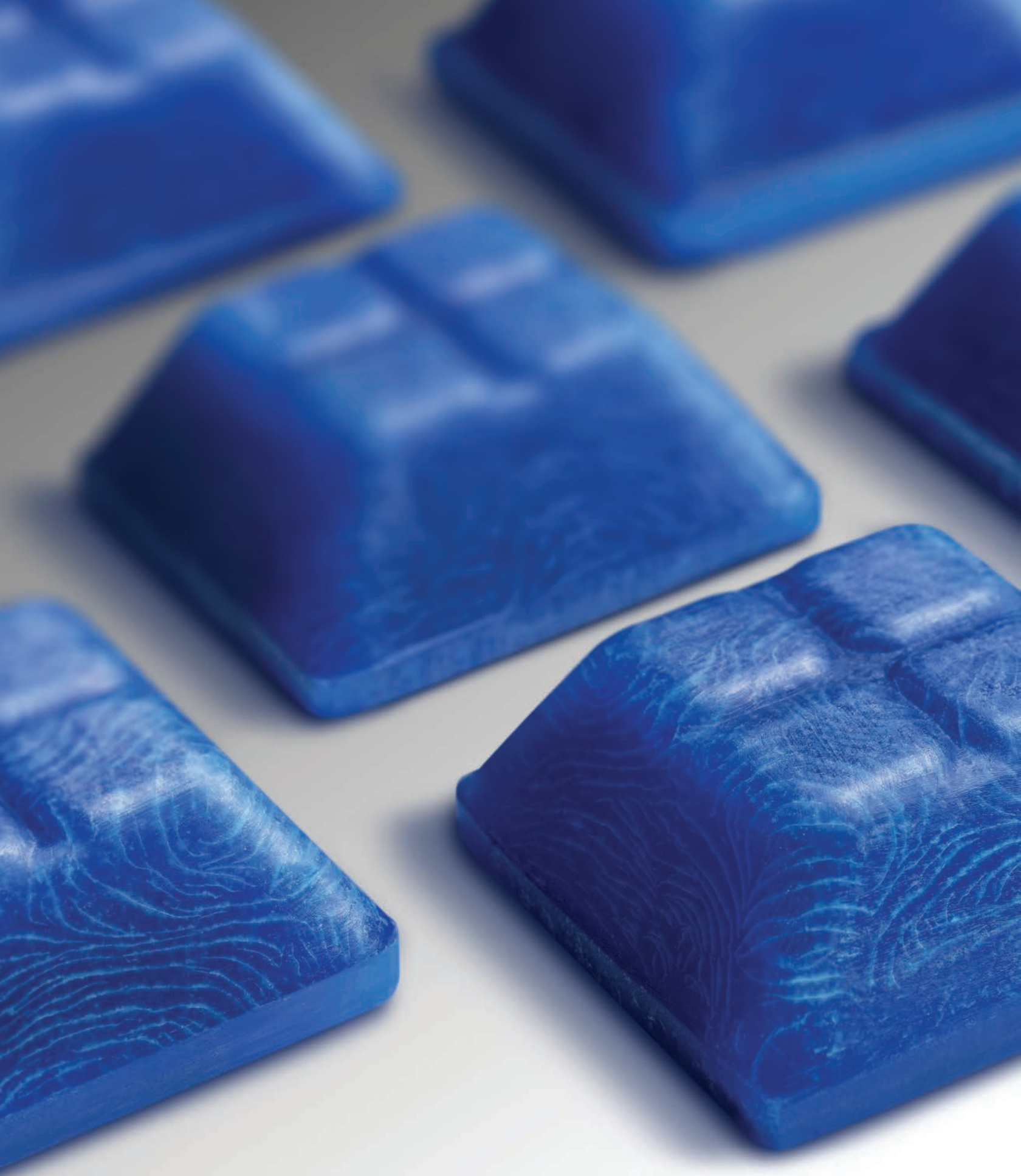
CP-PAN	10.5" x 15.5" x 2.5"
--------	----------------------



230-DPPL



CP-PAN



The image features several blue, textured panels, likely made of a polymer material, arranged in a staggered pattern. The panels have a wavy, organic texture and are set against a light gray background. A red banner is overlaid on the right side of the image, containing the word 'Treatments' in white text. Below the red banner is a dark blue banner containing a paragraph of text in white.

# Treatments

High-efficiency furnaces and on-demand water heaters are great for the environment, but their acidic condensate is not. Asurity™ condensate treatments neutralize the condensate eliminating corrosive damage. Wet environments can cause slime and sludge build-up, leading to blockages. Our range of pan treatment products protect the condensate system reducing maintenance between visits.

# Pan Treatments



## Pro-Treat® Condensate Pan Treatment

- Controls Odor and Pan Overflows
- Combats Sludge, Slime, Fouling
- Helps Maintain Clean Drain Pan
- Approved for Computer Room Use

PROTREAT-151*	100 Tablets	1 Tablet - 3 Tons/Mo.
PROTREAT-152	12 King Size Tablets	1 Tablet - 3 Tons/3Mo.
PROTREAT-161	100 Tablets	2 Tablet - 3 Tons/Mo.
PROTREAT-200	200 Tablets	2 Tablet - 3 Tons/Mo.
PROTREAT-217	200 Thin Tablets	3 Tablet - 3 Tons/Mo.
PROTREAT-350**	100 Tablets	3 Tablet - 3 Tons/Mo.

\*EPA Registered

\*\*INDUSTRIAL USE ONLY



## Flow-Plus® Condensate Pan Treatment

- Maintains Condensate Flow and Prevents Drain Pan Overflow
- Activated When Condensate Flows Over Surface
- Deodorizes
- Stays in Place
- No Residue

FLOW-PLUS-200	200 Mini Tabs	For 1/3 to 3 Ton Units
FLOW-PLUS-25	25 Mini Tabs	For 1/2 to 3 Ton Units
FLOW-PLUS-6	Light Tonnage	For 3 to 5 Ton Units
FLOW-PLUS-10	Medium Tonnage	For 5 to 20 Ton Units
FLOW-PLUS-125	High Tonnage	For 20 to 50 Ton Units
FLOW-PLUS-CP	6 Pump Treatment Tablets	
SCM-185-8	Flow Plus® Polymer Pan Treatment	(1) - 8lb Tub



## Pro-Treat® Line Guard

- Prevents Build Up from Zooglea in Condensate Drain Lines
- Infused with Copper and Silver Technology
- Keeps Condensate Lines Clean and Flowing a Full Year After Installation
- Customizable and Easy to Install, up to 100'

<b>PTLG-100</b>	100' Rope	1/4" Thick
-----------------	-----------	------------

## Pro-Treat® Condensate Pan Treatment



- Kills Odor-Causing Bacteria
- Controls Odor and Pan Overflows
- Combats Sludge, Slime, Fouling, and Algae Growth

<b>PS-01</b>	For Equipment From 1 to 2 Tons	10 Applications
<b>PS-03</b>	For Equipment From 3 to 5 Tons	6 Applications
<b>PS-07</b>	For Equipment From 7 to 12 Tons	2 Applications
<b>PS-20</b>	For Equipment From 10 to 25 Tons	1 Application
<b>PS-40</b>	For Equipment From 40 to 50 Tons	1 Application

EPA Registered

Each Pan Strip is a 6-Month Treatment

## Condensate Neutralization

### Horizontal Condensate Neutralizer

#### FEATURES:

- Suitable for 400,000 BTU/h at 93% Efficiency
- Prevents Acidic Condensate from Corroding Drains and Sewer Systems
- Helps Maintain a Neutral Environment for Bacteria in Septic Systems
- Suitable for Use on All Types of Natural Gas and Propane Appliances
- Includes Initial Charge of Neutralization Media



#### CNH-4K

#### CNH-4K INCLUDES:

- Corrosion Resistant Capsule
- Two Base/Wall Mounting Clips
- Two 3" Fill/Access Openings
- 3/4" NPT Threaded Inlet and Outlet
- Two 3/4" MNPT To 3/4" FNPT Unions
- Two 3/4" MNPT To 3/4" FPVC Socket Adaptor
- Neutralization Media

#### CNHK-4K (Horizontal Condensate Neutralizer Kit)

#### CNHK-4K KIT INCLUDES:

- Corrosion Resistant Capsule
- Two Base/Wall Mounting Clips
- Two 3" Fill/Access Openings
- 3/4" NPT Threaded Inlet and Outlet
- Two 3/4" MNPT To 3/4" FNPT Unions
- Three 3/4" NPT To 1/2" Hose Barb Fittings
- 6 Hose Clamps
- 10' of Tubing
- 1/2" Barbed Y Fitting
- Neutralization Media



## Vertical Condensate Neutralizer

- Suitable for 400,000 BTU/h at 93% Efficiency
- Prevents Acidic Condensate from Corroding Drains and Sewer Systems
- Helps Maintain a Neutral Environment for Bacteria in Septic Systems
- Suitable for Use on All Types of Natural Gas and Propane Appliances
- Float System Indicates if Unit has Become Plugged
- Integral Bypass Feature Prevents Condensate Backflow into Appliance
- 3/4" FNTF Inlet and Outlet Connections
- Includes Initial Charge of Neutralization Media

**CNV-4K**



## Neutralization Tank

- Suitable for 3 Million BTU/h at 93% Efficiency
- Prevents Acidic Condensate from Corroding Drains and Sewer Systems
- Helps Maintain a Neutral Environment for Bacteria in Septic Systems
- Suitable for Use on All Types of Natural Gas and Propane Appliances

**CNT-3M**

### Replacement For

## Neutralization Media

Prevents Acidic Condensate from Corroding Drains and Sewer Systems

<b>CNM-4K</b>	CNV-4K   CNH-4K   CNHK-4K
<b>CNM-BULK</b>	CNV-4K   CNH-4K   CNHK-4K
<b>CNM-3M</b>	CNT-3M



# Product Listing

Item Number	Product Description	UOM	Order Multi.	Page No.
<b>Pumps</b>				
CP-22LP	Cond. Pump, 120V, 22', Low Profile	EA	6	13
CP-22LP-230	Cond. Pump, 230V, 22', Low Profile	EA	6	13
CP-22LP-230-P	Cond. Pump, 230V, 22', Low Profile, Plenum	EA	6	13
CP-22LP-P	Cond. Pump, 120V, 22', Low Profile, Plenum	EA	6	13
CP-M115	Cond. Pump, Ductless, 115V, 24'	EA	10	16
CP-M230	Cond. Pump, Ductless, 230V, 24'	EA	10	16
CVMINI	Cond. Pump, Ductless, 120/240V, 35'	EA	6	16
IQP-120	Cond. Pump, ClearVue™, 120V, 22'	EA	6	13
IQP-120T	Cond. Pump, ClearVue™, 120V, 22', Tubing	EA	6	13
PROCP-16	Cond. Pump, Pro, 120V, 16'	EA	6	15
PROCP-16-230	Cond. Pump, Pro, 230V, 16'	EA	6	15
PROCP-22S	Cond. Pump, Pro, 120V, 22'	EA	6	15
PROCP-22S-230	Cond. Pump, Pro, 230V, 22'	EA	6	15
PROCP-22ST	Cond. Pump, Pro, 120V, 22', Tubing	EA	6	15
PROCP-22ST-230	Cond. Pump, Pro, 230V, 22', Tubing	EA	6	15
PROCP-46	Cond. Pump, 120V, 49'	EA	6	15
PROCP-46-230	Cond. Pump, 230V, 49'	EA	6	15
QUIETMINI-M	Cond. Pump, Ductless, 115/230V, 26'	EA	10	16
ULTRACP-22	Cond. Pump, Ultra, 120V 22"	EA	6	10
ULTRACP-22-230	Cond. Pump, Ultra, 230V, 22"	EA	6	10
ULTRACP-22T	Cond. Pump, Ultra, 120V, 22", Tubing	EA	6	11
ULTRACP-22T-230	Cond. Pump, Ultra, 230V, 22", Tubing	EA	6	11
<b>Switches</b>				
CC-1	Condensate Safety Overflow Switch	EA	12	21
CS-1	Condensate Safety Overflow Switch, Tee	EA	10	20
CS-1-BULK50	Condensate Safety Overflow Switch, Tee, Bulk	EA	50	20
CS-2	Condensate Safety Overflow Switch, Elbow	EA	10	20
CS-2-BULK50	Condensate Safety Overflow Switch, Elbow, Bulk	EA	50	20
CS-3	Condensate Safety Overflow Switch, Drain Pan Clip	EA	10	21
CS-3-BULK50	Condensate Safety Overflow Switch, Drain Pan Clip, Bulk	EA	50	21
CS1200	Condensate Safety Overflow Switch	EA	12	21
DTK113	Drain Trap Kit	EA	1	22
DTK113B	Drain Trap Kit	EA	1	22
DTK205	Drain Trap Kit with Condensate Safety Overflow Switch	EA	1	23
DTK207	Drain Trap Kit with Condensate Safety Overflow Switch	EA	1	23
DTK210	Drain Trap Kit with Condensate Safety Overflow Switch	EA	1	23
ET75	A/C Easy Tee®	EA	20	22
SOS-1	Condensate Safety Overflow Switch	EA	1	21
ST75	A/C Easy Tee® Service Tool	EA	6	22
UA-1	Universal Alarm	EA	1	21
WS-1	Wet Switch® Flood Detector	EA	1	20
WS-2DV	Wet Switch® Flood Detector Dual Voltage	EA	1	20
WTRAP	Waterless Trap	EA	25	22
<b>Drain Pans</b>				
6-1838L	Drain Pan, Plastic 18x38 L 5PK	EA	5	27
6-1838S	Drain Pan, Plastic 18x38 S 5PK	EA	5	27
6-2424L	Drain Pan, Plastic 24x24 L 5PK	EA	5	27
6-2626L	Drain Pan, Plastic 26x26 L 5PK	EA	5	27
6-2739L	Drain Pan, Plastic 27x39 L 5PK	EA	5	27
6-2748L	Drain Pan, Plastic 27x48 L 5PK	EA	5	27
6-2763L	Drain Pan, Plastic 27x63 L 5PK	EA	5	27
6-3030L	Drain Pan, Plastic 30x30 L 5PK	EA	5	27
6-3050L	Drain Pan, Plastic 30x50 L 5PK	EA	5	27
6-3060L	Drain Pan, Plastic 30x60 L 5PK	EA	5	27