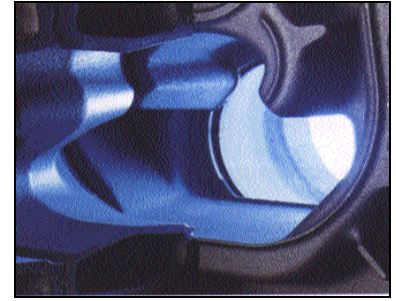


Buderus Sets the World Standard in Service and Quality

Buderus is widely recognized as the world leader in hot water heating technology with boilers made from special low-temperature adapted, flexible and corrosion resistant GL-180M cast iron sections. Profiled and beveled steel push nipples ensure long leak-free life. Special sealing material provides a gas tight seal for operation. The G115 modified three pass boiler is unsurpassed in efficiency without leaving any residue due to:

- 1) Optimized combustion with positive pressure fired boilers and optimum chamber geometry without a heat consuming refractory or target wall.
- 2) Minimal stack losses with modified three pass flue design with large heat transfer areas.
- 3) Low standby losses with 3" thermal insulation around entire block (even underneath).

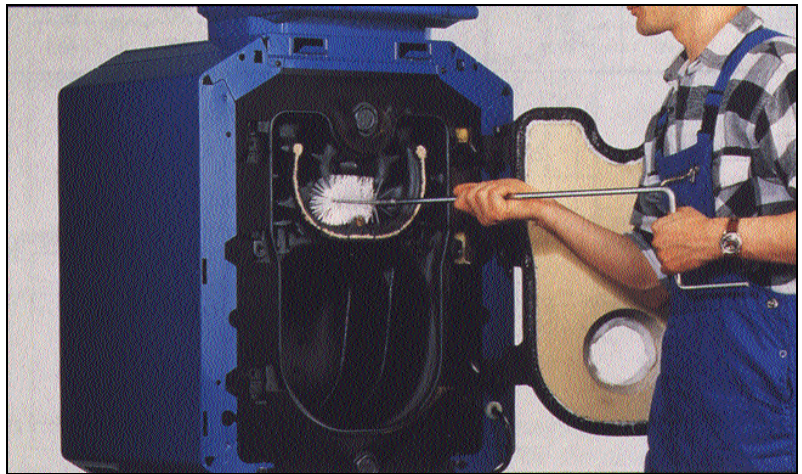


The Buderus special grey cast iron allows the combustion chamber and heating surface geometry to be ideally matched to the flame geometry and heat flow.

Logano G115 boilers extract and deliver more heat from every fuel dollar.

Installation and Maintenance Features:

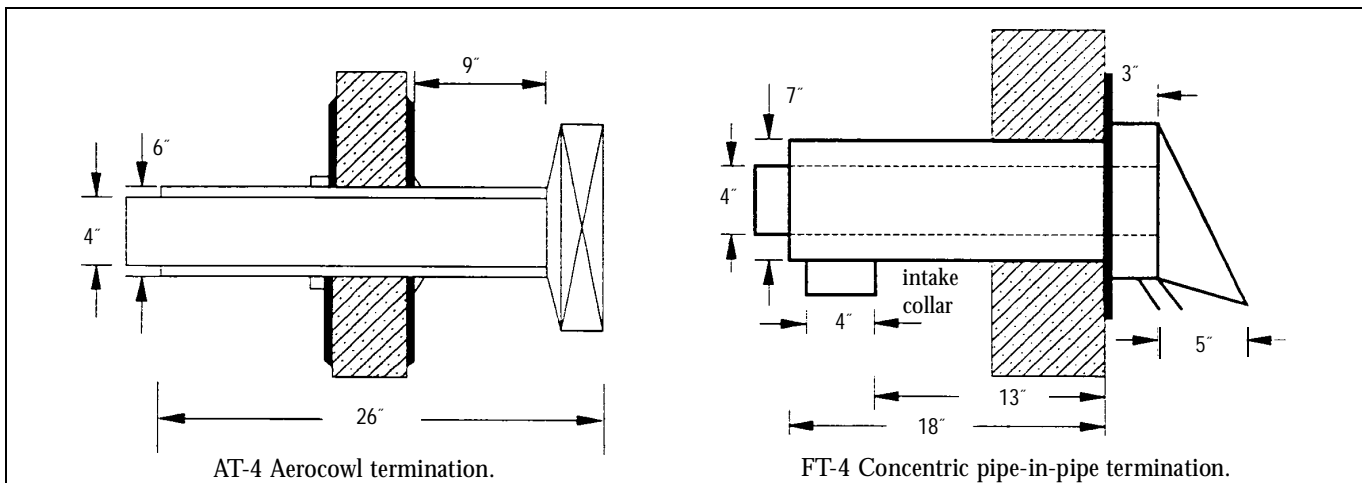
- 1) Full swing, reversible swing burner door for easy access, quick and thorough cleaning.
- 2) Adjustable screw-in feet for boiler leveling.
- 3) All rear tapings and flue connection for clean, finished appearance.
- 4) No refractory or target wall in chamber reduces maintenance and service costs.
- 5) Baffles and clips for adjusting stack temperatures.
- 6) Compact dimensions and integrated handles simplify transport and installation.
- 7) Front access plugs permit flushing of the water side of the boiler.



Buderus created the swing door on its combustion chamber for easy, thorough and proper cleaning. In fact, the Buderus boiler can be cleaned in a fraction of the time it takes to clean a conventional boiler, since it does not require disassembly.

Two Venting Options: Chimney Vent and Sealed Combustion without Power Venter.

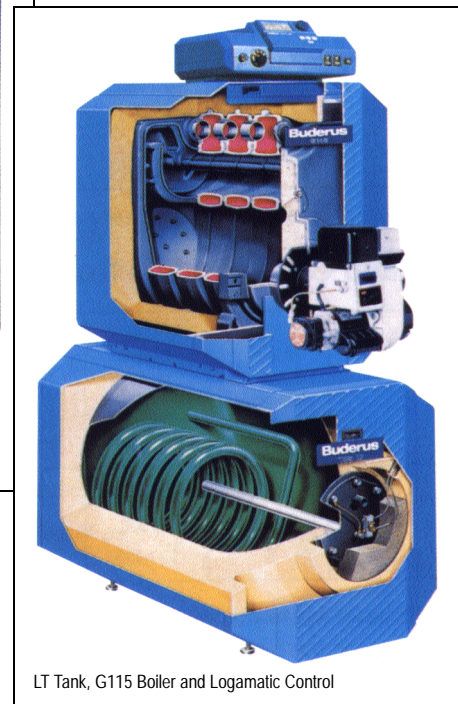
Vent into a chimney or directly through the wall with two ETL approved direct vent options.



Possible System Upgrades

Complement the G115 boiler with an indirect fired DHW storage tank

- Horizontal LT-tanks for small foot print.
- LT models from 36 to 79 gallons for every need.
- Vertical models for side by side installations.
- Vertical models from 42 to 106 gallons.
- Easy access port for cleaning of tank interior.
- “Duoclean” interior tank coating assures corrosion resistance for long life and easy cleaning.
- Large diameter coiled heat exchanger with excellent recovery rates.
- Heat exchanger capacity increases with tank size.
- Magnesium or electric anode rod for active corrosion protection.



Logano G115 and LT Tank Stackable Combinations

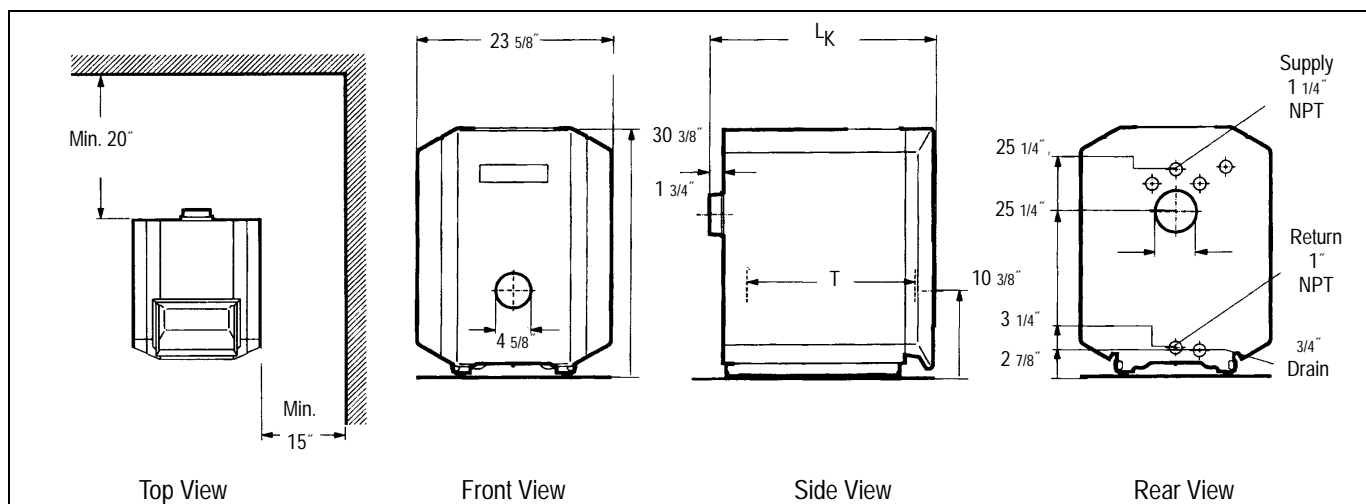
	G115/21	G115/28	G115/34
LT135	•	•	
LT160	•	•	
LT200	•	•	•
LT300	•	•	•

Buderus Logamatic Control Systems

- Low temperature boiler control for superior comfort, maximum fuel efficiency and quiet system operation.
- Complete heating system control based on outdoor temperature and indoor feedback with BFU sensor.
- Priority DHW heating with intelligent post-purge.
- Custom operation with adjustable factory heating programs.
- Fine-tuned radiant floor control with FM241 module.
- Dual boiler or 2-stage single boiler firing with FM242 module.
- Continuous self diagnostics with error display.
- Integrates all major control functions of hydronic systems.
- Emergency switch for override operation.



Dimensions and Technical Data for G115 Series Boilers



Note: G115 boiler approved for 6" side clearance. Above clearances are recommended for ample access.

Logano G115: Models from 74,000-120,000 BTU/Hr Heating Capacity



Boiler size	Number of sections	D.O.E. Heating Capacity BTU/Hr.	Net Rating BTU/Hr.	Firing Rate GPH	Boiler Length L _K in.	Combustion Chamber Length T in.	Flue connection dia D _A in.	Water Content Gal.	Net Weight lbs.	AFUE %
21	3	74,000	64,000	0.60	25 1/8	15 1/4	5	8.7	331	86.3
28	4	98,000	85,000	0.80	25 3/4	20	5	10.8	403	86.2
34	5	120,000	104,000	1.00	30 1/2	25	5	12.9	476	86.0

Ratings based on a heating value of 140,000 Btu/gal of No. 2 Fuel Oil, breaching draft of -.02 to -.03 In. W.C. and 13% CO₂. Minimum chimney height: 15'. Buderus recommends the use of customized Becket AFII, Carlin EZ-1 and Riello F3 and F5 burners when firing G115 boilers with oil in chimney vent applications. Buderus Hydronic Systems, Inc. offers above burners customized, complete with L8148A aquastat, flexible oil line, circulator and flanges.

Logano G115 Sealed Combustion Oil Boilers

One of two ETL certified terminations are required for use with G115 Series boilers for direct vent applications. Both terminations are "zero clearance" systems for easy and versatile applications.

ETL approved with 2 4" 90° elbows and up to 6' of 4" regular smoke pipe for short vent runs. For longer runs, use up to 10 ft. of flexible stainless steel insulated oil vent.

Clearance requirements to combustibles for boiler and exhaust systems:

Front of Boiler	Side of Boiler	Rear of Boiler	Top of Boiler	Galv. Vent Pipe	Flex. Insulated Oil Vent	AT-4 Exhaust only Termination	FT-4 Concentric Pipe in Pipe Termination
24"	6"	18"	6"	18"	1"	1"	1"



Built in accordance with the requirements of the ASME Boiler and Pressure Vessel Code

Burner Options for Sealed Combustion: Carlin P10, Riello BF3 and BF5.

- Use 4" metal pipe for air intake. It is recommended to have at least 6' to 8' of 4" metal pipe as air intake in conditioned space in cold climates (below -20°F).
- Sealed combustion burners equipped with pre and post-purge cycles for complete exhaust of all combustion products and cools oil burner nozzle for positive shut-off.
- Extreme quiet operation with sealed combustion boilers eliminates chimney and lowers total system cost.