

# KDS 3060 alcove shower

**Model number:**

142036

**Dimensions:** 60" x 30" x 82"

**Installation:** Alcove

**Material:** Fiberglass



## Standard Features:

- Four-piece gelcoated fiberglass shower with PIN system for easy front installation
- Large top corner shelves, wide soap dish and standard acrylic handle (opt. metallic finishes)
- Right/left-hand seat (drain opposite to seat) or no seat (center drain)
- Optional unique features: Reinforced walls and grab bars
- Product also available in Above-the-Floor

## Product characteristics:

- Multi-Piece Unit
- Easy Installation
- PIN system

## Warranty:

5 Years

## Standard colors:



White (002)



Bone (004)



Biscuit (007)

## Certifications

MAAX products adhere to one or more of the following certifications:



## Recommended doors (Visit our website for a complete list of our recommended doors)

Description	No
OPT10109	One 12-in. handle with metallic finish
OPT20204	24" Modern straight grab bar
OPT20212	Wall reinforcement (one wall)
OPT20203-B	18" Modern straight horizontal grab bar on back wall

## Options (Visit our website for a complete list of our options)

No	Description
<input type="checkbox"/> OPT 10109	One 12-in. handle with metallic finish
<input type="checkbox"/> OPT 20204	24" Modern straight grab bar
<input type="checkbox"/> OPT 20212	Wall reinforcement (one wall)
<input type="checkbox"/> OPT 20203-B	18" Modern straight horizontal grab bar on back wall

# KDS 3060 alcove shower

**Model number:**

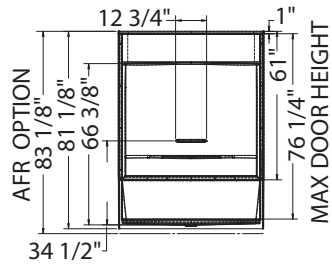
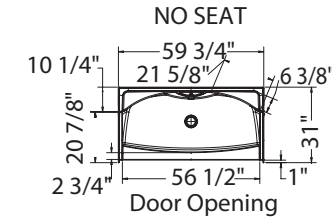
**142036**

**Dimensions:** 60" x 30" x 82"

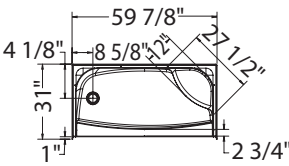
**Installation:** Alcove

**Material:** Fiberglass

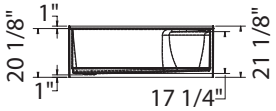
**STANDARD**



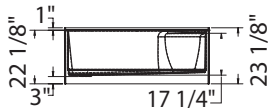
**RIGHT SEAT SHOWN  
LEFT SEAT SYMMETRICAL**



**NOT ABOVE-THE-FLOOR**

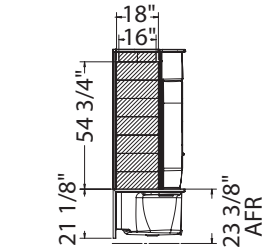


**ABOVE-THE-FLOOR**

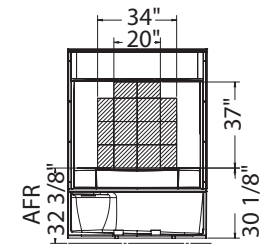


**REINFORCEMENT BACKING**

OPTION 20212-L Shown  
OPTION 20212-R Symetrical

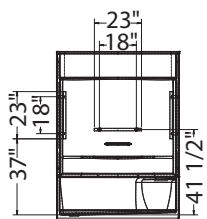


**OPTION 20212-B**

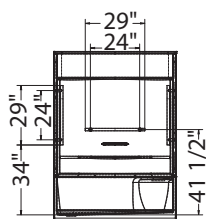


**GRAB BARS**

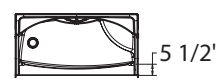
**OPTION 20203**



**OPTION 20204**



**OPTION  
20203-20204**



All dimensions are approximate. Structure measurements must be verified against the unit to ensure proper fit.

**Dimensions:**

59 3/4 x 30 x 82 1/8 in.  
(1518 x 762 x 2032 mm)

**Weight:**

152 lbs - 69 kg

**Shape:**

Rectangular

**Pieces:**

4

**Drain location:**

No seat, center drain

Left seat, right drain

Right seat, left drain

Project:

Contractor:

Representative:

Date:

Tel:

Notes: