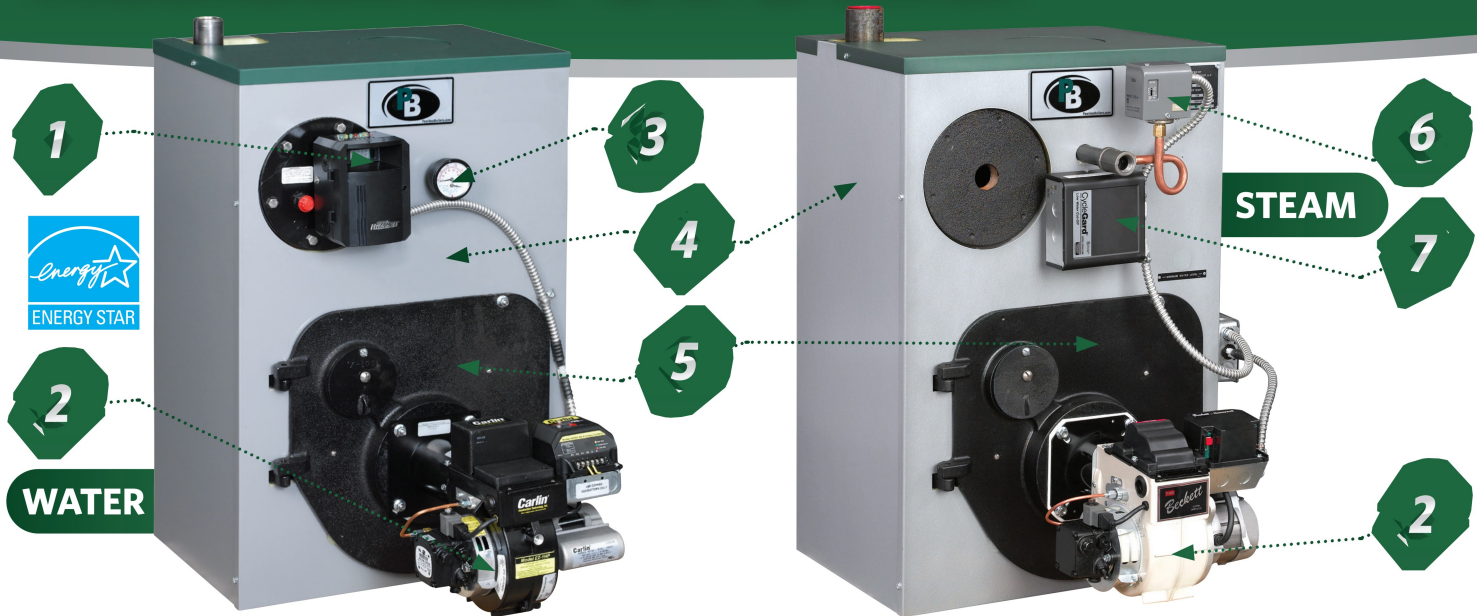


Peerless® Boilers



PeerlessBoilers.com

Series WBV® Residential Oil Boiler



Series WBV® Boiler Features

- ✓ **Up to 87.5% AFUE**
ENERGY STAR® Certified* *certain firing rates
- ✓ **All Models - DOE 2021 Compliant!**
- ✓ **Natural Draft (Chimney) Venting**
- ✓ **High Efficiency, Flame Retention Burners**
Choice of Beckett, Carlin or Riello 2
- ✓ **Cast Iron Sections** - Factory Tested and Assembled with Steel Push Nipples
- ✓ **Wet Base Section Design**
Ideal for Steam and Hot Water Applications
- ✓ **Rear or Top Flue Convertibility** (certain models)
- ✓ **Insulated, Deluxe Powder Coated Steel Jacket**
Reduces Boiler Heat Loss 4
- ✓ **Full Plate Swing-Out Door**
For Quick and Easy Cleaning 5
- ✓ **Built-in Air Elimination Baffle**

Standard Equipment

- | | | | | | |
|------------|---------------------------------|--------------|---|--------------|---|
| ALL | ✓ Drain Valve
✓ Top Cleanout | WATER | ✓ Boiler Reset Control w/ Low Water Cut-off (HydroStat 3250) for Increased Efficiency and Safety 1
✓ Taco Circulator
✓ Temperature-Pressure Gauge 3 | STEAM | ✓ Probe Type LWCO 7
✓ Skim Tapping
✓ Pressure Control 6
✓ Pressure Gauge |
|------------|---------------------------------|--------------|---|--------------|---|

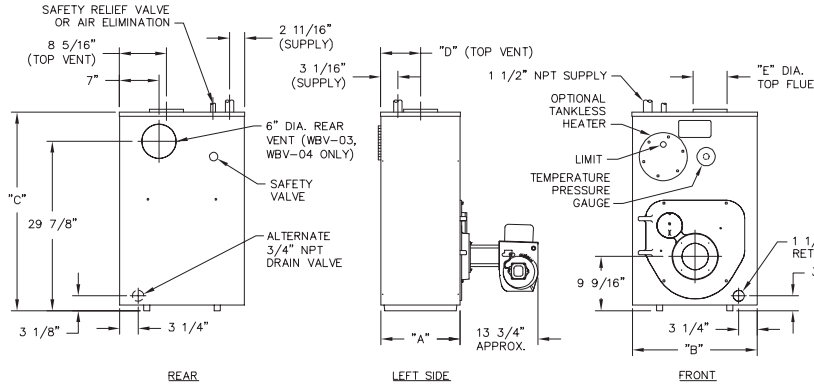
PeerlessBoilers.com

LIFETIME WARRANTY

All residential cast iron boilers include a full one-year warranty. A limited, lifetime warranty is provided for the cast iron sections of Peerless® residential hot water boilers. A limited, ten-year warranty is provided on the cast iron sections of residential steam boilers. Visit PeerlessBoilers.com for complete details.

Technical Information

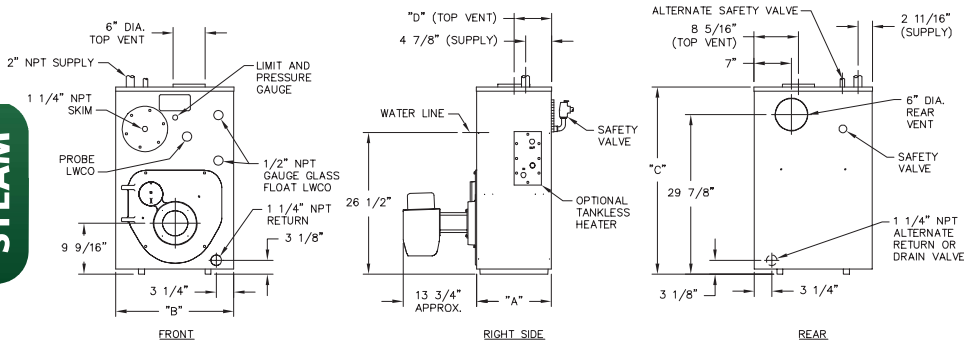
WATER



BOILER DIMENSIONS

Boiler Model Number	Jacket Depth "A"	Jacket Width "B"	Jacket Height "C"	Rear of Jacket to c/l of Vent "D"	Vent Size Diameter "E"
WATER					
WBV-e-03-060/085/105	14-1/8"	22-1/8"	35"	7-1/16"	6"
WBV-e-04-095/125/150	18-1/8"	22-1/8"	35"	9-1/16"	6"
WBV-e-05-175/195	22-1/8"	22-1/8"	35"	11-1/16"	7"
STEAM					
WBV-e-03-085/105	15-3/4"	22-1/8"	35"	8-7/8"	—
WBV-e-04-125/150	19-3/4"	22-1/8"	35"	10-7/8"	—

STEAM



SERIES WBV® BOILER RATINGS - WATER



Boiler Model Number	Input		Heating Capacity ³ MBH	Net Ratings ²		AFUE ³ , %
	GPH ¹	MBH		Water, MBH	Water	
WBV-e-03-060-W	0.60 [†]	84	75	65	87.5*	11.75
WBV-e-03-085-W	0.85	119	105	91	87.1*	11.75
WBV-e-03-105-W	1.05	147	127	110	86.0	11.75
WBV-e-04-095-W	0.95 [†]	133	117	102	87.0*	14.75
WBV-e-04-125-W	1.25	175	154	134	87.1*	14.75
WBV-e-04-150-W	1.50	210	183	159	86.1	14.75
WBV-e-05-175-W [‡]	1.75	245	214	186	86.6	17.75
WBV-e-05-195-W [‡]	1.95	273	237	206	86.1	17.75

Water Content

Minimum Stack Draft Required, in. W.C.

* As an ENERGY STAR® Partner, PB Heat, LLC has determined that these firing rates meet the ENERGY STAR guidelines for energy efficiency.

† Top venting only.

‡ Nozzles for these firing rates not provided as standard equipment. Consult Factory for price and availability.

§ This firing rate can only be achieved with a Riello F-3 burner. See Installation, Operation and Maintenance Manual.

1 Burner input based on No. 2 fuel oil with a heating value of 140,000 Btu per gallon.

2 Net water ratings based on an allowance of 1.133. Consult Factory before selecting a boiler for installations having unusual piping and pickup requirements, such as intermittent system operation, extensive piping systems, etc.

3 Heating Capacity and Annual Fuel Utilization Efficiency (AFUE) ratings are based on U.S. Government tests. Chimney Size: 8" x 8" x 15 ft.

SERIES WBV® BOILER RATINGS - STEAM



Boiler Model Number	Input		Heating Capacity ³ MBH	Net Ratings ²		AFUE ³ , %
	GPH ¹	MBH		Steam Sq. Ft.	Steam, MBH	
WBV-e-03-085-S	0.85	119	104	325	78	85.6
WBV-e-03-105-S	1.05	147	127	396	95	85.0
WBV-e-04-125-S	1.25	175	152	475	114	85.6
WBV-e-04-150-S	1.50	210	180	563	135	85.0

Water Content

Minimum Stack Draft Required, in. W.C.

1 Burner input based on No. 2 fuel oil with a heating value of 140,000 Btu per gallon.

2 Net steam ratings based on an allowance of 1.333. Consult Factory before selecting a boiler for installations having unusual piping and pickup requirements, such as intermittent system operation, extensive piping systems, etc.

3 Heating Capacity and Annual Fuel Utilization Efficiency (AFUE) ratings are based on U.S. Government tests. Chimney Size: 8" x 8" x 15 ft.



PeerlessBoilers.com

CUT-WBV R6 (1/21-5M)

Printed in U.S.A.

©2021 PB Heat, LLC. All rights reserved.