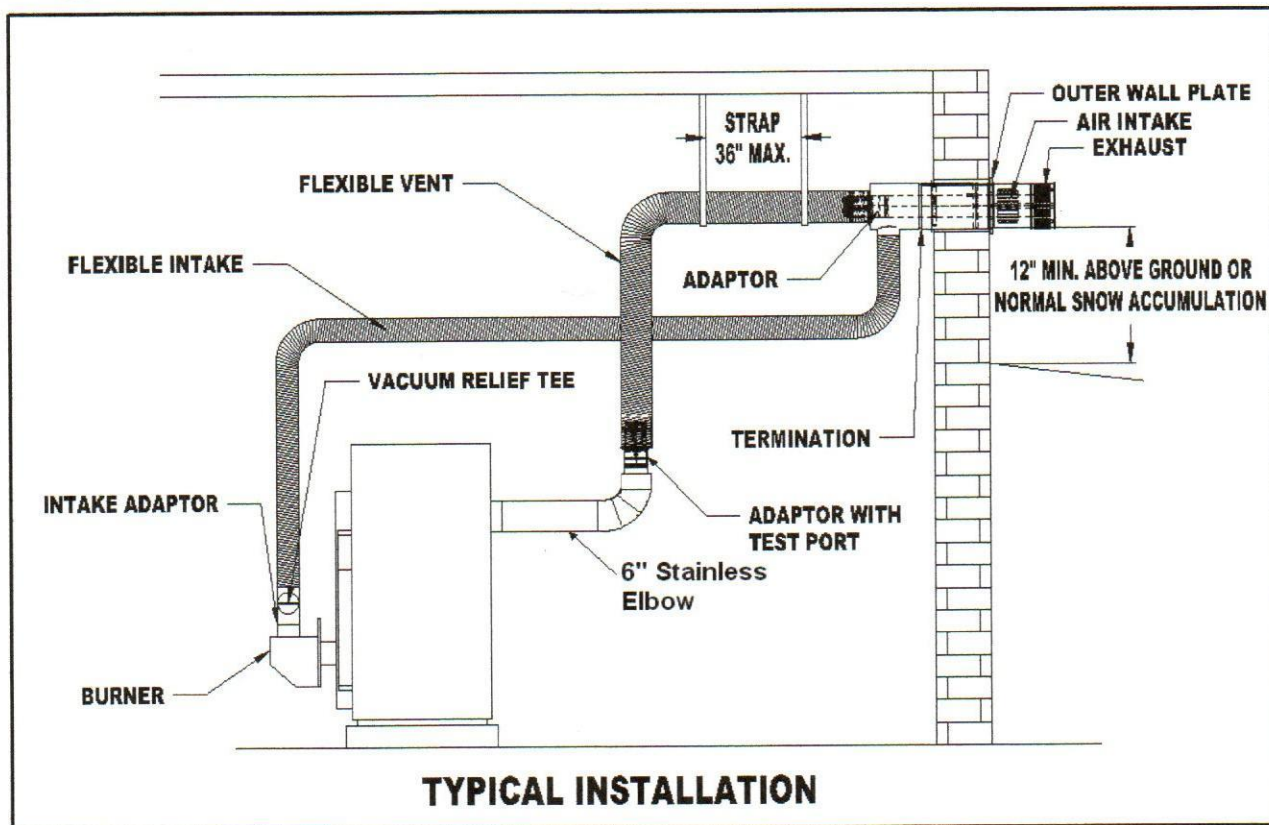


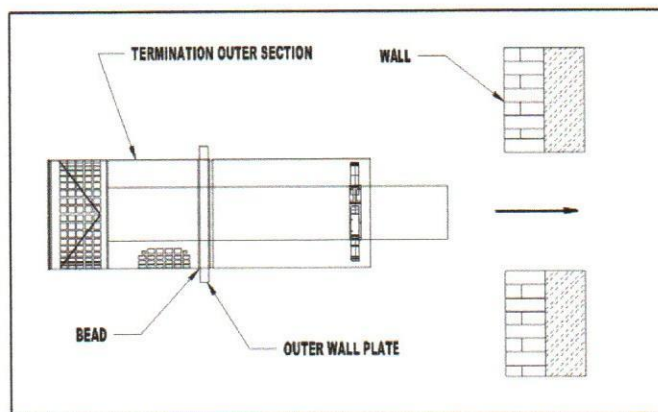
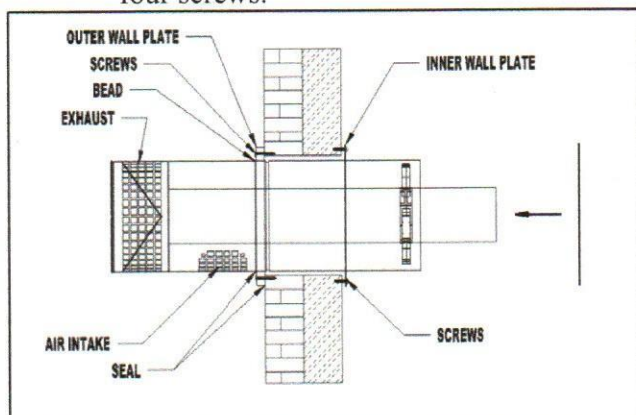
## Vent Installation

1. Vent Pipe bend radius is 12" minimum
2. Support vent pipe with metal strapping every 36"
3. Maximum wall thickness is 14". Call Z-Flex for recommendations on thicker walls
4. System is not designed for common venting. Use for single boiler only.
5. Appliance adaptor test port is included for combustion test for proper burner adjustment.



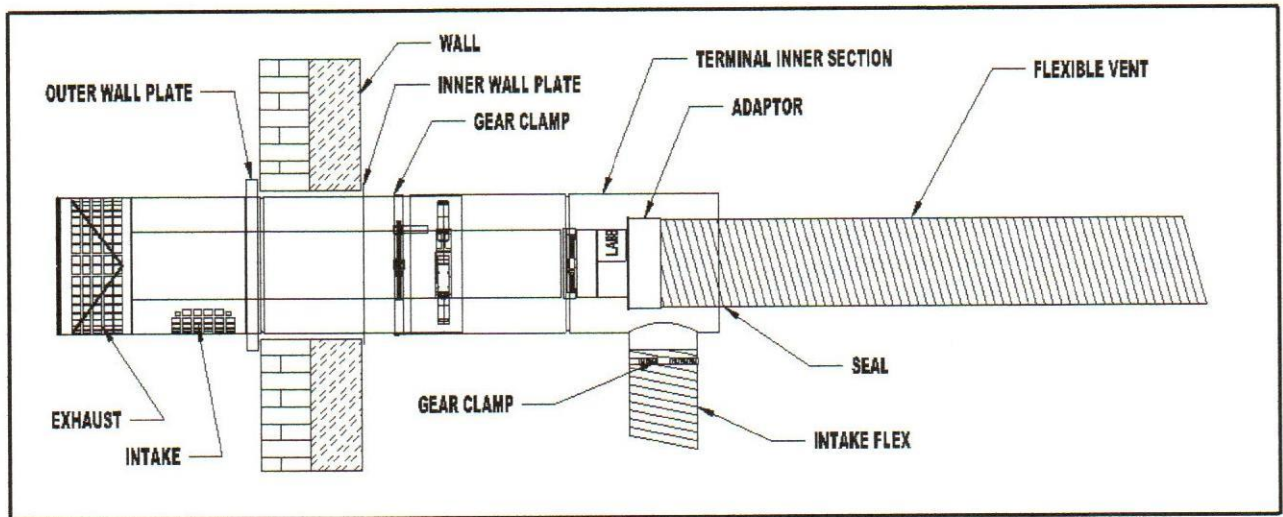
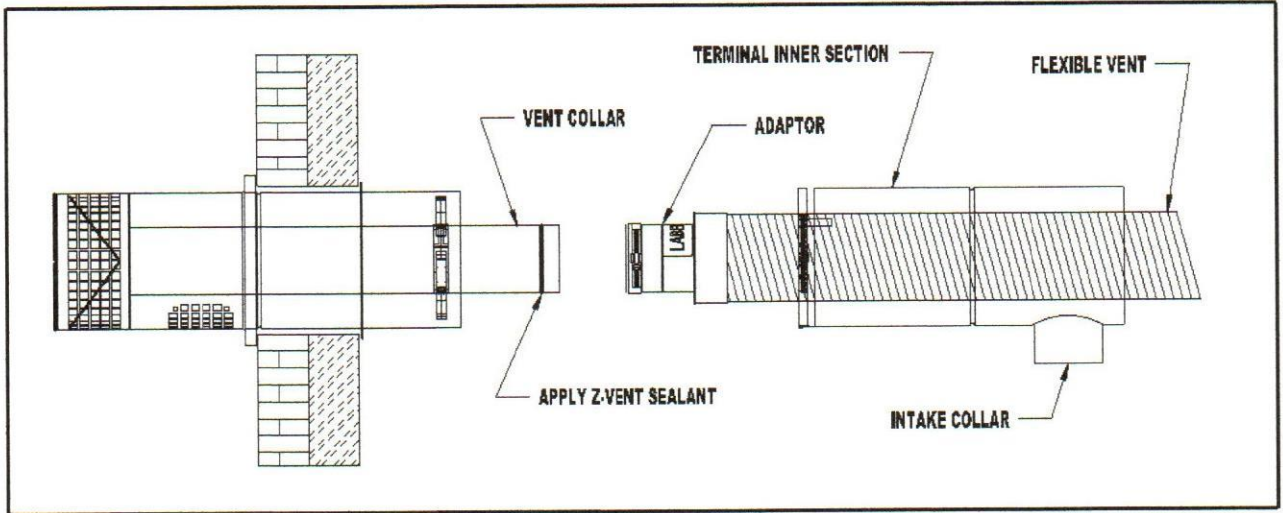
## Termination Installation

1. Determine proper location for termination.
2. Cut an 8-1/2" hole through the wall.
3. Pull apart the inner and outer termination sections
4. From outside the building, insert the outer section through the wall until it rests against the wall. Position the outer section so that the air intake is on the bottom. Secure to outer wall using four screws. Seal with a weather proof sealant around the edge to avoid water from entering.
5. From the inside, slide the inner wall plate over the outer section and secure it to the wall with four screws.



## Termination Connection

1. Slide the terminal inner section over the flexible vent pipe.
2. Attach the adaptor as per the joint assembly instructions.
3. Apply a bead of sealant around the flue collar and slide on adaptor and tighten gear clamp.
4. Seal the seam on the adaptor.
5. Slide the terminal inner section over the terminal outer section and secure by tightening the gear clamp.
6. Stretch the intake flex to the desired length and slide over intake collar and secure by tightening the gear clamp.
7. Seal the gap between the vent pipe and the terminal inner section with silicone sealant.



## JOINT ASSEMBLY

1. Apply Sealant to "threaded" end of the vent adaptor.
2. Insert the threaded end into the vent pipe. Screw the adaptor into the vent pipe in a counter clockwise direction. The adaptor should be inserted fully until it is tight. If it does not completely screw into the vent, unscrew and repeat.
3. Tighten the gear clamp on to the outer sleeve to complete the joint assembly.

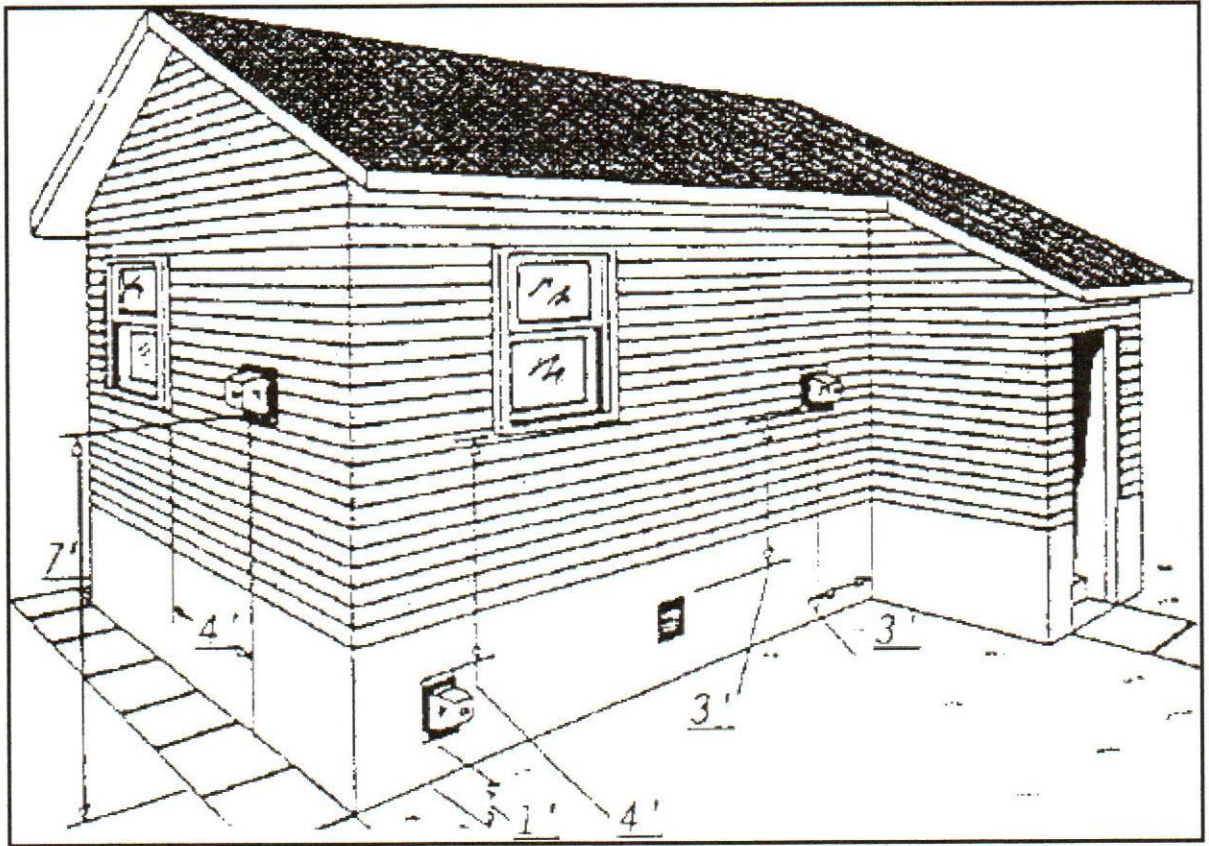


Figure 1

### Vent Kit Components

- (1) Z-Flex DVO 4" Concentric Termination
- (1) 10' or 15' length of 4" double wall insulated flexible stainless vent piping 12" minimum bend radius
- (1) 6" Stainless elbow
- (1) Stainless appliance adapter 6" to 4" flex with test port
- (1) Vent Adaptor 4" to 4" flex
- (1) 4" Flexible air intake piping to match vent length.
- (2) 4" Air intake piping clamps
- (1) 4" 90 Deg. galvanized elbow,
- (1) Field Controls VRV-4, 4" Vacuum Relief Valve
- (1) Tube of high temperature sealant