

# Optima *i.q.*® EAF-150



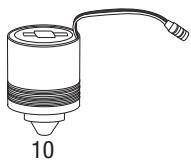
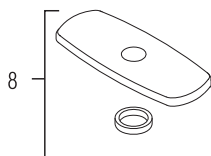
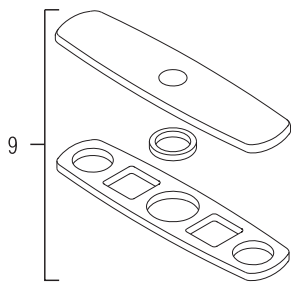
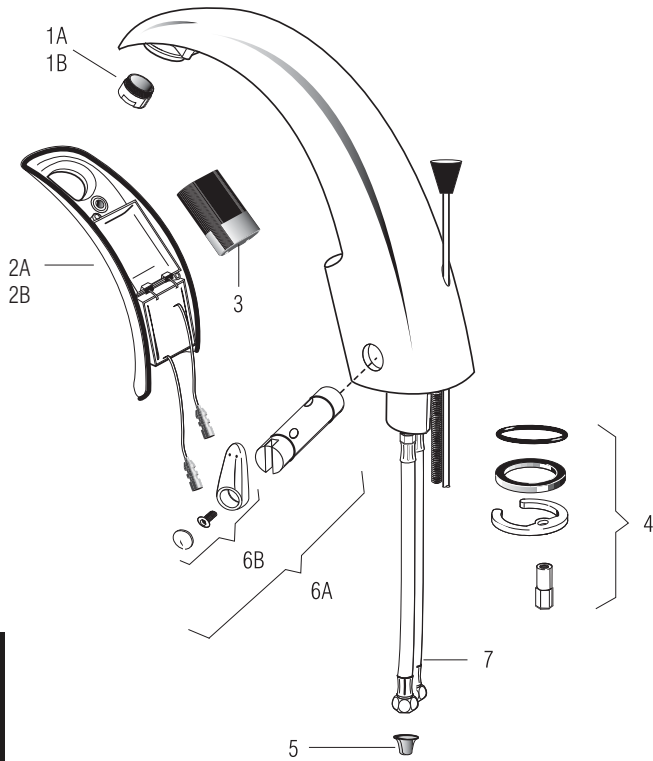
EAF-150



EAF-150-ISM-DPU-IC

## PARTS LIST—EAF-150 FAUCETS

Item			
No.	Code No.	Part No.	Description
1A.	<b>0335008</b>	EAF-10	2.2 gpm (8.3 Lpm) Aerator Spray Head
1B.	<b>0335010</b>	EAF-12	0.5 gpm (1.9 Lpm) Spray Head
1C.	<b>0335029</b>	EAF-51	0.35 gpm (1.3 Lpm) Spray Head (Multi-Lam)
2A.	<b>0335002</b>	EAF-3-A	Throat Plate Assembly (Battery Models)
2B.	<b>0335003</b>	EAF-4-A	Throat Plate Assembly with <i>i.q.-cliq</i> ™ (Battery Model)
3.	<b>3335009</b>	EAF-1000	Battery Replacement Kit
4.	<b>0335000</b>	EAF-1	Faucet Mounting Kit
5.	<b>0335007</b>	EAF-9	Strainer (Filter)
6A.	<b>3335010</b>	EAF-1001	Mixer Handle Assembly and Cartridge
6B.	<b>3335011</b>	EAF-1002	Handle Repair Kit
7.	<b>3335023</b>	EAF-1008	13" (330 mm) Flexible Supply Hose
8.	<b>3365302</b>	ETF-607-A	Trim Plate for 4" Center-set Sink
9.	<b>3365303</b>	ETF-608-A	Trim Plate for 8" Center-set Sink
10.	<b>0335001</b>	EAF-2	Solenoid



Hand Hygiene

# Optima i.q.® EAF-150

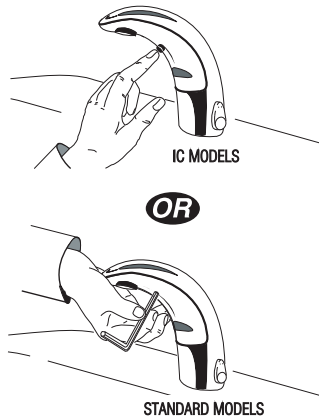
## AUTO RANGE ADJUSTMENT

Press button one (1) time, then immediately step away.

Faucet will run for four (4) seconds and the range will automatically adjust to its environment.

Wait ten (10) seconds after water shuts off before using faucet.

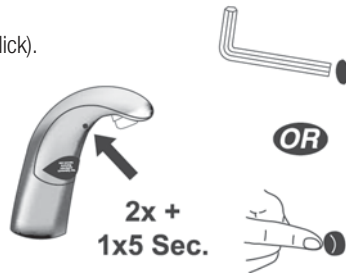
If faucet does not function, refer to the Troubleshooting section of this instruction manual.



## MANUAL RANGE ADJUSTMENT

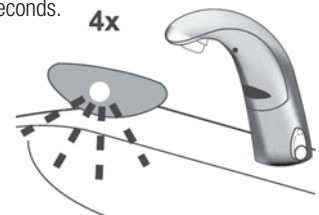
**Note: Use Manual range adjustment only when desired range cannot be obtained with auto range adjustment shown above.**

Push button two (2) times (double click).



Push again for five (5) seconds until LED flashes four (4) times.

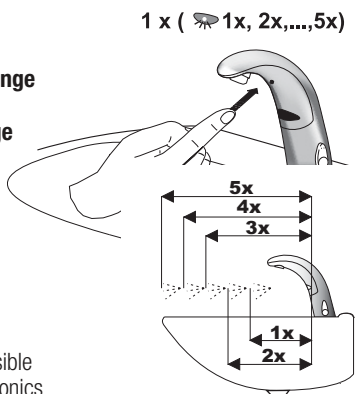
Then release button and wait five (5) seconds.



Push and hold button in as faucet continuously cycles through the following five (5) range settings.

- One (1) flash = shortest range**
- Two (2) flashes = short range**
- Three (3) flashes = medium range**
- Four (4) flashes = long range**
- Five (5) flashes = longest range**

Release button at desired setting. Then water will flow for four (4) seconds signaling confirmation of setting. Wait an additional ten (10) seconds before using faucet.



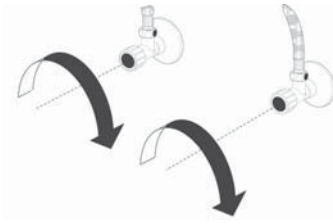
Note: Updated electronics have visible red and green LED. Original electronics have only red LED and range setting is reversed (1 = longest, 8 = shortest)

## BATTERY REPLACEMENT

Replace battery when red LED indicator flashes each time faucet is in use or when faucet stops functioning.

### Step 1

Close supply stop(s).



### Step 2

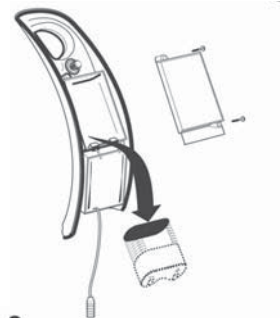
Loosen screw with hex wrench.

Remove throat plate. Disconnect electrical lead at connector if required.



### Step 3

Remove battery cover using a No. 1 Phillips head screwdriver. Remove old battery. Dispose of properly.



### Step 4

Wait three (3) minutes before inserting new battery.



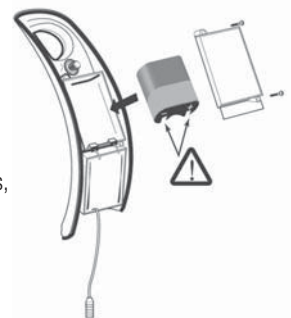
### Step 5

Insert a new 6 volt type CR-P2 lithium battery. The red LED will flash for one (1) minute. Reinstall battery cover.

Reconnect electrical lead at connector if previously disconnected. Reinstall throat plate.

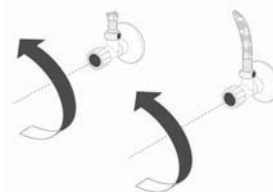
If LED doesn't flash or if it just lights up, remove the battery. Wait three (3) minutes, then reinsert the battery.

If water flows continuously after inserting the new battery and opening the supply stops, remove the battery. Wait three (3) minutes, then reinsert the battery.



### Step 6

Open supply stops.



## Optima *i.q.*® EAF-150

### SERVICE OPERATION

#### Prepare for operation

A. Press the button once.

B. Remove sticker.

C. Water will flow 4 seconds

D. Wait 10 seconds, then the faucet is ready for use.

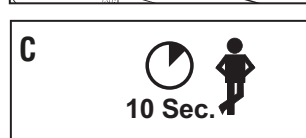
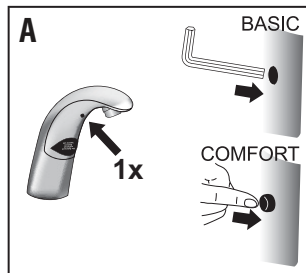
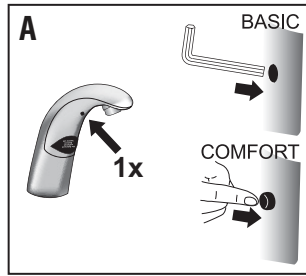
**If waterflow doesn't start after removing the sticker and the red led within the sensor flashes continue with the following procedure!!**

A. Press the button once.

B. Hold a white sheet of paper 1.5" (40 mm) in front of sensor until water flows for 4 seconds

C. Remove paper.

D. Wait 10 seconds, then the faucet is ready for use.



### TROUBLESHOOTING GUIDE

#### 1. Faucet does not function.

- A. Adhesive packaging label affixed over sensor eye.  
Remove adhesive label from sensor eye.
- B. "Permanent Off" activated.  
Press button on faucet throat one time.

#### 2. Faucet delivers water in an uncontrolled manner.

- A. Faucet is not working properly.  
Contact Sloan Technical Support at 1-888-SLOAN-14 (1-888-756-2614).

#### 3. Faucet does not deliver any water when sensor is activated.

**INDICATOR: Solenoid valve produces an audible "CLICK."**

- A. Water supply stop(s) closed.  
Open water supply stop(s).
- B. Water supply stop strainer(s) clogged.  
Clean water supply stop strainer(s).

**INDICATOR: Solenoid valve DOES NOT produce an audible "CLICK."**

- A. Battery low (EAF-150 Models).  
Replace battery (refer to battery replacement).

#### 4. Faucet delivers only a slow flow or dribble when sensor is activated.

- A. Water supply stop(s) are partially closed.  
Completely open water supply stop(s).
- B. Water supply stop strainer(s) clogged.  
Remove, clean, and reinstall water supply stop strainer(s). Replace strainer(s) if required.
- C. Aerator is clogged.  
Remove, clean, and reinstall aerator. Replace aerator if required.
- D. Faucet is not working properly.  
Contact Sloan Technical Support at 1-888-SLOAN-14 (1-888-756-2614).

#### 5. Faucet does not stop delivering water or continues to drip after user is no longer detected.

- A. Faucet is not working properly.  
Contact Sloan Technical Support at 1-888-SLOAN-14 (1-888-756-2614).

#### 6. *i.q.-cliq* doesn't function (-IC models only)

- A. Button is not working properly.  
Contact Sloan Technical Support at 1-888-SLOAN-14 (1-888-756-2614).

#### 7. The water temperature is too hot or too cold on a faucet connected to hot and cold supply lines.

- A. Supply stops are not adjusted properly.  
Adjust supply stops.
- B. For models with integral mixing valve – mixing valve is set improperly for the water temperature desired.  
Rotate mixing valve handle clockwise to decrease water temperature or counterclockwise to increase water temperature.

#### CARE AND CLEANING OF CHROME AND SPECIAL FINISHES

DO NOT use abrasive or chemical cleaners (including chlorine bleach) to clean faucets that may dull the luster and attack the chrome or special decorative finishes. Use ONLY mild soap and water, then wipe dry with clean cloth or towel.

While cleaning the bathroom tile, protect the faucet from any splattering of cleaner. Acids and cleaning fluids will discolor or remove chrome plating.



**When assistance is required, please contact Sloan Technical Support at: 1-888-SLOAN-14 (1-888-756-2614).**