

INSTALLATION



PRO1200
PRO1200BN



Tools:

- Adjustable wrench
- Pier
- Pipe tape
- Silicone sealant

Cleaning:

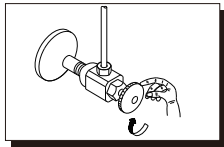
To maintain and protect the fine luster of all products, clean with a soft, damp cloth only. DO NOT USE detergents or cleansers as they may harm the protective finish.

Warning and Notes:

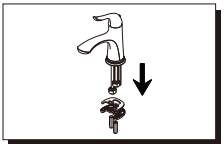
Check with local plumbing code requirements before installation; This product should be installed by a local licensed plumber; To meet EPA requirements, replace original aerator after flushing lines.

Installation Steps:

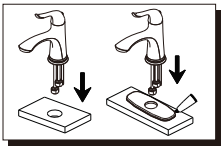
Single Handle Lavatory Faucet



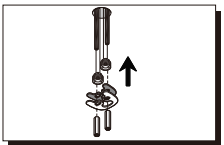
- Shut off the water supply. Remove old faucet.



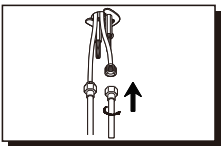
- Remove lock nuts, metal washer, and rubber washer.



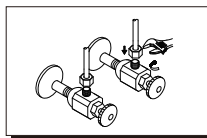
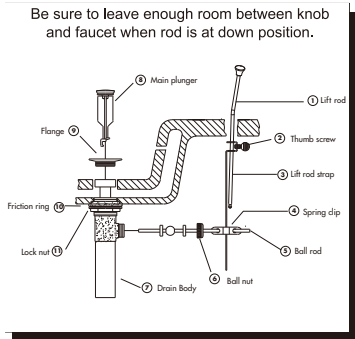
- Position new faucet. The cover plate is optional, please determine whether you want to install or not. Install faucet body and base trim ring through top of sink.



- Use the lock nuts to secure the rubber washer and metal washer.



- Slip coupling nuts onto water supply tubes and screw onto inlet ports.

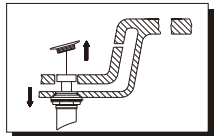


- Tighten end of shank with wrench and slip coupling nut onto inlet port.

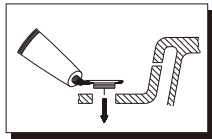


- After installing faucet, remove aerator and turn on water to remove any left over debris. Re-assemble aerator.

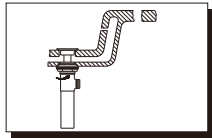
Pop-up Drain Installation



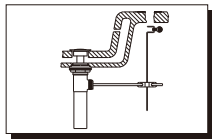
- Remove old pop-up drain assembly.



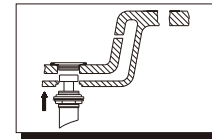
- Place a ring of putty around drain opening of sink.



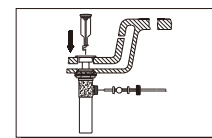
- Thread lock nut from underside of sink until rubber washer sits securely inside opening of sink. Tighten lock nut.



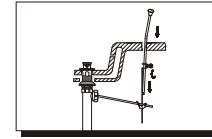
- Place one end of spring clip on end of ball rod. Pass the tip of the rod through the hole in the lift rod strap and then through the hole on the other end of the spring clip.



- Insert threaded end of drain body up through drain hole and attach flange to body.

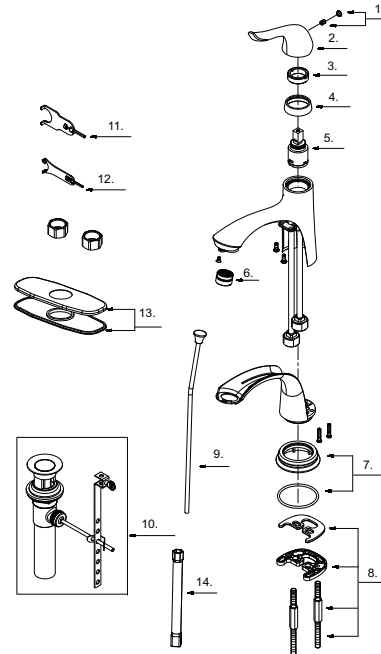


- Insert main plunger into drain. Insert ball rod into rod port and into hole at bottom of main plunger.



- Insert bottom of lift rod into hole at top of lift rod strap. Tighten with thumb screw.

Exploded Drawing:



No.	Part Name	Part No.
1	Index Button-Cold/Hot	A66D558
2	Metal Handle	A069048
3	Locking Nut	A104322
4	Trim Cap	A103005
5	Cartridge Assembly	A507906N
6	Aerator	A500992N-50
7	Handle Trim Ring	A66F280
8	Mounting Hardware Assembly	A603196
9	Lift Rod	A025113
10	Pop-up Assembly	A556200
11	Locking Nut Wrench	A031022NI
12	Aerator Wrench	A031249NI
13	Cover Plate & Putty plate	A663082-S
14	Wrench	A031223

Customer Service
For additional assistance, service or parts,
call 1-888-328-2383