

# Petite<sup>9</sup>

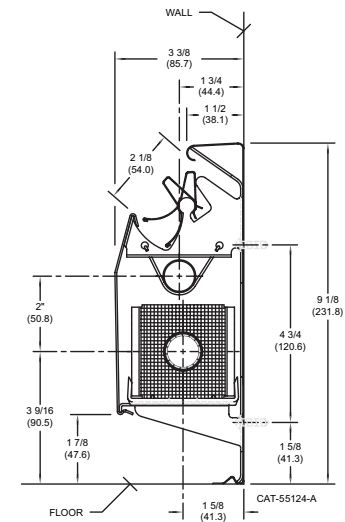


HIGH CAPACITY  
BASEBOARD  
RADIATION

### RATINGS

| MODEL   | GPM | AVERAGE HOT WATER TEMPERATURE °F - BTU/HR./LIN. FT. |      |      |      |      |      |      |      |      |
|---------|-----|---|------|------|------|------|------|------|------|------|
|         |     | 120°  | 130° | 140° | 150° | 160° | 170° | 180° | 190° | 200° |
| P9 3/4" | 4   | 308   | 386  | 470  | 560  | 650  | 750  | 850  | 940  | 1040 |
|         | 1   | 292   | 366  | 445  | 530  | 620  | 710  | 800  | 890  | 980  |
| P9 1"   | 4   | 297   | 373  | 454  | 540  | 630  | 730  | 820  | 920  | 1010 |
|         | 1   | 281   | 352  | 428  | 510  | 600  | 690  | 780  | 870  | 960  |

NOTES: All the ratings noted include a 15% addition for heating effect. These ratings are based on active length, which is total length less 4 1/2". Pressure drop for element with nominal 3/4" copper tube is 0.47 inches of water per linear foot at 1.0 GPM and .525 inches at 4.0 GPM. Pressure drop for element with nominal 1" copper tube is 0.13 inches of water per linear foot at 1.0 GPM and .145 inches at 4.0 GPM. The use of ratings at 4.0 GPM (2000 lbs. per hour) is limited to installations where the water flow rate through the baseboard unit is equal to or greater than 4.0 GPM. Where the water flow rate through the baseboard is not known, the rating of 1.0 GPM (500 lbs. per hour) must be used.



NOTE: DIMENSIONS IN "I" ARE SHOWN IN MILLIMETERS.

| DESCRIPTION                    | CAT. NO. | PER CARTON |
|--------------------------------|----------|------------|
| 4" End Cap - Right Hand Hinged | P9-REC   | 12         |
| 4" End Cap - Left Hand Hinged  | P9-LEC   | 12         |
| 3" Solid End Cap, Right        | P9-3REC  | 10         |
| 3" Solid End Cap, Left         | P9-3LEC  | 10         |
| 4" Solid End Cap, Right        | P9-4REC  | 8          |
| 4" Solid End Cap, Left         | P9-4LEC  | 8          |
| 90° Inside Corner              | P9-IC    | 12         |
| 135° Inside Corner             | P9-ICB   | AS ORDERED |
| 90° Outside Corner             | P9-OC    | 10         |
| 135° Outside Corner            | P9-OCB   | AS ORDERED |
| 2" Panel Joiner (3 pcs)        | P9-PJ    | AS ORDERED |
| 4" Wall Trim to Floor          | P9-WJ    | 12         |
| Element Slide Cradle           | P9-ESC   | AS ORDERED |
| Support Bracket + Nylon Cradle | P9-BR    | AS ORDERED |
| Supply Tube Hanger (lower)     | P9-STH   | AS ORDERED |
| Return Tube Hanger (upper)     | P9-RTH   | AS ORDERED |
| 14" Filler Piece Set           | P9-FIS   | AS ORDERED |
| Touch-Up Spray Paint           | P9-TUP   | 6          |

| ASSEMBLED BASEBOARD  | ELEMENT SIZE | CARTON NO. SPECIFY  |
|--|--------------|---|
| Model P9CU75 complete assembled units (single pack) include one length each of back panel, front panel, damper-louver and 3/4" heating element, 18 GA. front panel, plus required support brackets and element cradle expansion clips. Panel joiner included with 5', 6' & 8' lengths. | 3/4" CU      | P9CU75-8<br>P9CU75-7<br>P9CU75-6<br>P9CU75-5<br>P9CU75-4<br>P9CU75-3<br>P9CU75-2        |
| Model P9CU100 complete assembled units (single pack) include one length each of back panel, front panel, damper-louver and 1" heating element, plus required support brackets and element cradle expansion clips. Panel joiner included with 5', 6', & 8' lengths.                     | 1" CU        | P9CU100-8<br>P9CU100-7<br>P9CU100-6<br>P9CU100-5<br>P9CU100-4<br>P9CU100-3<br>P9CU100-2 |
| ENCLOSURE ONLY   | PACKING      | CARTON NO. SPECIFY  |
| Model P9CO enclosure only assembled (single pack) 18GA. includes one length each of back panel, front panel, damper-louver plus required support brackets. Panel joiner included with 5', 6' & 8' lengths.   | ASSEMBLED    | P9CO-8<br>P9CO-7<br>P9CO-6<br>P9CO-5<br>P9CO-4<br>P9CO-3<br>P9CO-2                      |
| ELEMENT ONLY   | ELEMENT SIZE | CARTON NO. SPECIFY  |
| E75 3/4" CU tube elements only elements and cradles individually boxed.  | 3/4" CU      | E75-8<br>E75-7<br>E75-6<br>E75-5<br>E75-4<br>E75-3<br>E75-2                             |
| E100 1" CU tube elements only, elements and cradles individually boxed.  | 1" CU        | E100-8<br>E100-7<br>E100-6<br>E100-5<br>E100-4<br>E100-3<br>E100-2                      |