

Wall Mounted Rectangular Eye/ Face Wash Bowl

FEATURES:

- Large rectangular stainless steel bowl
- (6) brass chrome-plated aerated sprays
- Yellow polypropylene shrouds
- ½ in. NPT female, chrome-plated valve
- Stainless steel push handle activator
- ½ in. NPT female inlet
- Brass, chrome-plated in-line strainer
- 9.3 gpm @ 30 psi
- Universal emergency sign included

FINISHES:



Stainless Steel

COMPLIANCE:

- Certified to ANSI/ ISEA Z358.1

OPTIONS:

Add suffix to model #

- | | |
|------------------------------------|---------------------------------|
| • Freeze protection valve | <input type="checkbox"/> -FPV |
| • Hand/foot operation | <input type="checkbox"/> -HFO |
| • SE-920 hand held drench hose | <input type="checkbox"/> -HS |
| • P-Trap | <input type="checkbox"/> -PT |
| • Scald protection valve | <input type="checkbox"/> -SPV |
| • ½ in. stainless steel ball valve | <input type="checkbox"/> -SSBV2 |

WARRANTY:

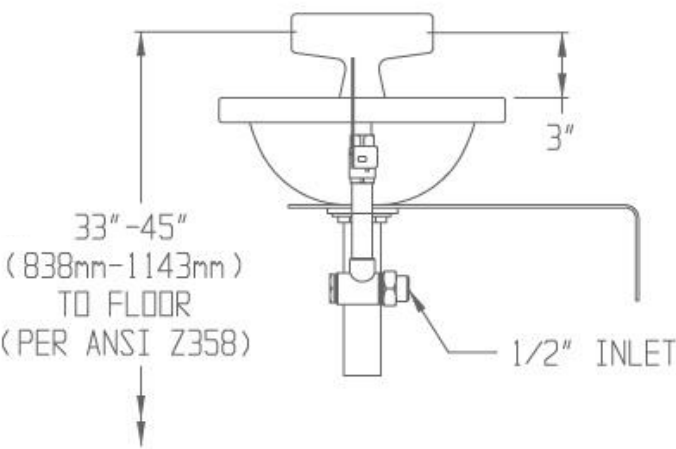
- 3 year limited



Architect/Engineer Approval Space:

SPEAKMAN
400 ANCHOR MILL ROAD
NEW CASTLE, DE 19720

P: 800-537-2107
F: 800-977-2747
W: WWW.SPEAKMAN.COM
R: MARCH 2017



Architect/ Engineer Approval Space:

SPEAKMAN
400 ANCHOR MILL ROAD
NEW CASTLE, DE 19720
P: 800-537-2107
F: 800-977-2747
W: WWW.SPEAKMAN.COM
R: MARCH 2017