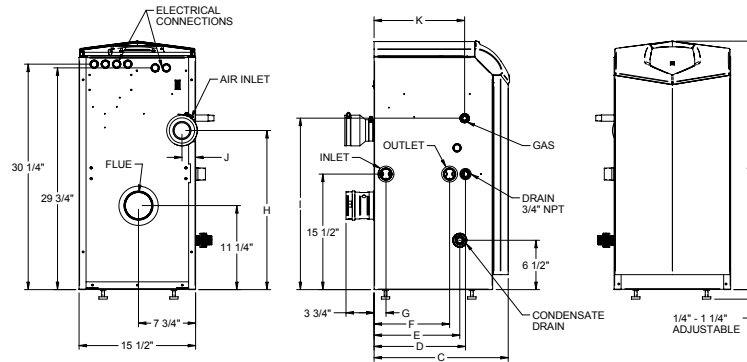


# ARMOR™ WATER HEATER DIMENSIONS AND SPECIFICATIONS

## MODELS 151 & 200

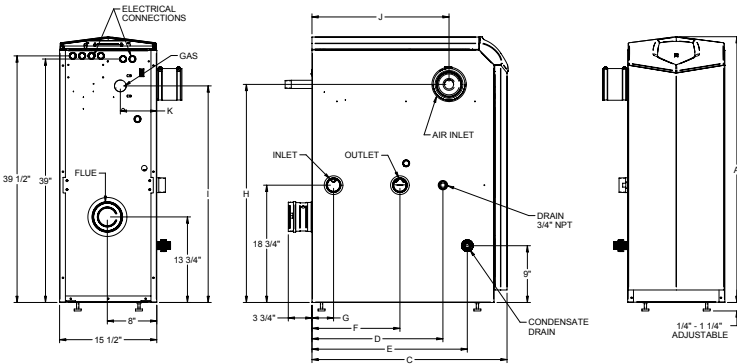


## MODELS 286-801

### Model Number Guide

AW	N	151	PM
Model	Natural Gas	Btu/hr Input	Pump Mount

Armor Water Heater,  
Natural Gas,  
150,000 Btu/hr Input,  
Pump Mount



Model Number	Btu/hr Input	GPH @ 100° Rise	A	C	D	E	F	G	H	I	J	K	Gas Conn.	Water Conn.	Air Inlet	Vent Size	Shipping Wt. (lbs.)
AWN151PM	150,000	175	33-1/4"	18"	12-1/4"	11-1/2"	10"	1-1/2"	21-1/4"	23"	1-3/4"	12"	1/2"	1-1/4"	3"	3"	165
AWN200PM	199,999	233	33-1/4"	22-1/4"	16-1/2"	15-3/4"	14-1/4"	5-1/4"	21-1/4"	23"	1-3/4"	16-1/4"	1/2"	1-1/4"	3"	3"	181
AWN286PM	285,000	332	42-1/2"	19-3/4"	12-3/4"	13-1/2"	6"	2"	34"	31"	11-3/4"	4-1/4"	3/4"	2"	4"	4"	236
AWN400PM	399,999	466	42-1/2"	27"	21"	20-3/4"	14"	3-1/2"	34"	34"	18-3/4"	2"	1"	2"	4"	4"	306
AWN501PM	500,000	582	42-1/2"	31-1/2"	21"	25"	14"	3-1/2"	35"	35"	22"	5-3/4"	1"	2"	4"	4"	339
AWN601PM	600,000	699	42-1/2"	36-1/4"	21"	25"	14"	3-1/2"	36"	32-3/4"	19-1/2"	5-1/2"	1"	2"	4"	4"	380
AWN701PM	700,000	815	42-1/2"	40-1/4"	23"	29"	17"	3-1/2"	36"	32-3/4"	23-1/2"	3-1/4"	1"	2"	4"	6"	461
AWN801PM	800,000	931	42-1/2"	45-1/4"	23"	33-1/4"	17"	3-1/2"	36"	32-3/4"	27-3/4"	3-1/4"	1"	2"	4"	6"	527

## STANDARD FEATURES

- > 96% Thermal Efficiency (AHRI Certified)
- > Modulating Burner with 5:1 Turndown
  - Direct-Spark Ignition
  - Low NOx Operation
  - Sealed Combustion
  - Low Gas Pressure Operation
- > Vertical & Horizontal Direct-Vent
  - PVC, CPVC, Polypropylene or SS up to 100 Feet
  - PVC/CPVC Sidewall Vent Termination
- > Stainless Steel Heat Exchanger
  - All Welded Construction, Gasketless Design
  - 160 psi Working Pressure
  - ASME Construction (AW 286-801)
- > Natural to L.P. Conversion Kit
- > All Bronze Circulating Pump
- > On/Off Switch
- > Flow Switch
- > ASME Temperature & Pressure Relief Valve (286-801)
- > Downstream Test Valves (AW 501-801)
- > Adjustable Leveling Legs
- > Tank Sensor
- > Adjustable High Limit w/ Manual Reset
- > Automatic Reset High Limit
- > Condensate Trap
- > Zero Clearances to Combustible Material
- > 5 Year Limited Warranty (See Warranty for Details)
- > 1 Year Parts Warranty (See Warranty for Details)

## SMART SYSTEM FEATURES

- > SMART SYSTEM Digital Operating Control
  - Multi Color Graphic LCD Display
- > Built in Cascading Sequencer for up to 8 Water Heaters
  - Multiple Size Water Heater Cascade
  - Lead Lag
  - Efficiency Optimization
  - Front-End Loading Capability with CopperFin II
- > Building Management System Integration
  - 0-10 VDC Input to Control Modulation or Set point
  - 0-10 VDC Modulation Rate Output
  - 0-10 VDC Input to Enable/Disable call for heat
- > Access to BMS Settings Through Graphic LCD Display
- > Low Water Flow Safety Control & Indication
- > Inlet & Outlet Temperature Sensors & Readout
- > Flue Temperature Sensor
- > Water Heater Pump Control
- > Pump Delay with Freeze Protection
- > Pump Exercise
- > Night Setback
- > Building Recirculation Loop Pump Control\*
  - Night Setback of Building Recirculation Loop\*
- > Time Clock
- > Maintenance Reminder
  - Ability to program installer name and number into the product as service contact
- > High Voltage Terminal Strip
  - 120 VAC / 60 Hertz / 1 Phase Power Supply
  - Pump Control Contacts
  - Water Heater Pump Control Contacts
  - Building Recirculation Pump Control Contacts

\*Exclusive to Lochinvar

## Low Voltage Terminal Strip

- 24 VAC Auxiliary Device Relay
- Auxiliary Proving Switch Contacts
- Flow Switch Contacts
- Alarm on Any Failure Contacts
- Runtime Contacts
- Tank Sensor Contacts
- Cascade Contacts
- 0-10 VDC BMS External Control Contact
- 0-10 VDC Boiler Rate Output Contacts

## FIRING CONTROL SYSTEMS

- M9 Standard Construction
- M7 California Code (AW 286-801)

## OPTIONAL EQUIPMENT

- > Alarm Bell
- > Condensate Neutralization Kit
- > High & Low Gas Pressure Switches (AW 501-801)
- > Concentric Vent Kit (3" & 4" PVC/CPVC only)
- > BMS Gateway to LON
- > Bacnet Communication
- > ModBus Communication
- > SMART SYSTEM PC Software
- > Room Air Vent Kits
- > Stack Frame



Lochinvar, LLC  
300 Maddox Simpson Parkway  
Lebanon, Tennessee 37090  
P: 615.889.8900 / F: 615.547.1000  
Lochinvar.com

