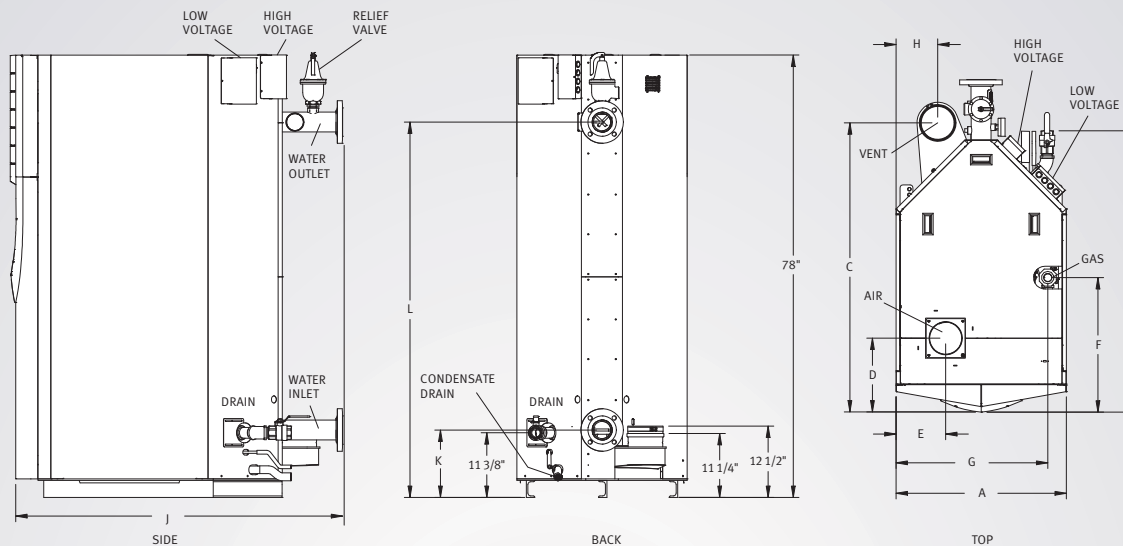


# CREST® BOILER DIMENSIONS AND SPECIFICATIONS



Model Number	Input MBH		AHRI Thermal %	Output MBH	Net AHRI Rating MBH	Turndown	Dimensions (inches)										Weights (lb)						
	Min	Max					A	B	C	D	E	F	G	H	J	K	L	Gas Conn.	Water Inlet/Outlet	Air Intake	Vent Size	Oper. Weight	Ship. Weight
FBN0751	50	750	96.2%	722	627	15:1	30"	49-1/2"	51"	13"	8-3/4"	23-3/4"	26-3/4"	7-3/8"	57-5/8"	11-7/8"	66-1/8"	1-1/4"	3"	6"	6"	1,768	1,560
FBN1001	50	1,000	96.2%	962	837	20:1	30"	49-1/2"	51"	13"	8-3/4"	23-1/8"	26-3/4"	6-1/2"	57-5/8"	11-7/8"	66-1/8"	1-1/4"	3"	6"	6"	1,838	1,596
FBN1251	63	1,250	96.2%	1,203	1,046	20:1	30"	49-1/2"	51-3/8"	13"	8-3/4"	21-5/8"	26-3/4"	6-1/2"	57-3/4"	11-7/8"	66-1/8"	1-1/4"	3"	6"	8"	1,975	1,648
FBN1501	60	1,500	96.2%	1,443	1,255	25:1	30"	59-1/4"	62-3/8"	15-7/8"	9"	27-7/8"	26-7/8"	5-1/8"	68"	12-3/8"	65-3/8"	1-1/2"	4"	8"	8"	2,307	1,961
FBN1751	70	1,750	96.2%	1,684	1,464	25:1	30"	58-3/4"	61-1/2"	15-7/8"	9"	27-1/8"	27"	5-1/8"	68"	12-3/8"	65-3/8"	1-1/2"	4"	8"	8"	2,458	2,017
FBN2001	80	1,999	96.2%	1,924	1,673	25:1	30"	58-3/4"	61-1/2"	15-7/8"	9"	26-3/4"	27"	5-1/8"	68"	12-3/8"	65-3/8"	1-1/2"	4"	8"	8"	2,570	2,087

NOTES: Indoor installation only. Change "N" to "L" for LP gas models and to "D" for dual fuel models. (Consult factory for availability of Dual Fuel models)

\*Information subject to change without notice

## SMART TOUCH™ FEATURES

### CON-X-US Remote Connect

SMART TOUCH Touchscreen Operating Control  
Full-Color 8" Touchscreen LCD Display

### Built-in Cascading Sequencer for up to 8 Boilers

- › Built-in Redundancy
- › Cascade Multiple Sized Boilers
- › Lead/Lag Cascade
- › Efficiency Optimized Cascade

### Front-End Loading Capability with Copper-Fin II® and Power-Fin® Boilers

### Building Management System Integration with 0-10 VDC Input

### BACnet MSTP Communications

### Modbus Communication

### Outdoor Reset Control with Outdoor Air Sensor

### Password Security

### Domestic Hot Water Prioritization

- › DHW tank piped with priority in the boiler loop
- › DHW tank piped as a zone in the system with the pumps controlled by the Smart System
- › DHW Modulation Limiting
- › Separately Adjustable SH/DHW Switching Times

### Low Water Flow Safety Control & Indication Inlet & Outlet Temperature Readout

### Freeze Protection

### Service Reminder

### Time Clock

### Data Logging

- › Hours Running, Space Heating
- › Hours Running, Domestic Hot Water
- › Hours Running, Modulation Rate
- › Ignition Attempts
- › Last 10 Lockouts

### Programmable System Efficiency Optimizers

- › Night Setback
- › Anti-Cycling
- › Outdoor Air Reset Curve
- › Ramp Delay
- › Boost Temperature & Time
- › Modulation Factor Control

### Three Pump Control

- › System Pump
- › Boiler Pump
- › Domestic Hot Water Pump

### High-Voltage Terminal Strip

- › 120 VAC / 60 Hertz / 1 Phase Power Supply
- › System Pump, Boiler Pump and DHW Pump Power

### Low-Voltage Terminal Strip

- › 24 VAC Auxiliary Device Relay
- › Auxiliary Proving Switch Contacts
- › Alarm on Any Failure Contacts
- › Runtime Contacts
- › DHW Thermostat Contacts
- › Unit Enable/Disable Contacts
- › System Sensor Contacts
- › DHW Tank Sensor Contacts
- › Outdoor Air Sensor Contacts
- › Cascade Contacts
- › 0-10 VDC BMS External Control Contact
- › 0-10 VDC Variable Speed Boiler Pump Control Contact

## OPTIONAL EQUIPMENT

### Alarm Bell

### BMS Gateway - BACnet IP or LonWorks

### Wireless Outdoor Temperature Sensor

### Condensate Neutralization Kit

### SMART TOUCH PC Software

### Common Vent Kits

### Dual Fuel Gas Train

### Motorized Isolation Valve

### Variable Speed Boiler Pump

### Electrical Options (Shipped Loose):

- › 208V/3Ø/60Hz
- › 480V/3Ø/60Hz
- › 600V/3Ø/60Hz

## CODES & REGISTRATIONS

### ANSI Z21.13/CSA Certified

### ASME Certified, "H" Stamp / National Board

### California Code Compliant

### CSD1 / Factory Mutual / GE Gap Compliant

### Canadian Registration Number (CRN)

### South Coast Air Quality Management District Qualified

### AHRI Certified

## STANDARD FEATURES

### 96.2% Thermal Efficiency (AHRI)

### Up to 99% Thermal Efficiency in Low-Temp. Applications

### Modulating Burner with up to 25:1 Turndown

### Direct-Spark Ignition

### Low NOx Operation

### Sealed Combustion

### Air Inlet Filter w/Replacement Reminder

### Low Gas Pressure Operation

### Vertical and Horizontal Direct Venting

- › Direct Vent up to 100 Feet

- › PVC, CPVC, Polypropylene or AL29-4C

### ASME "H" Stamped Heat Exchanger

### 316L Stainless Steel Fire Tubes

### 160 psi Working Pressure

### On/Off Switch

### Adjustable High Limit with Manual Reset

### Low Water Cutoff with Manual Reset & Test

### High & Low Gas Pressure Switches w/Manual Reset

### Low Air Pressure Switches

### Condensate Trap w/Blocked Drain Switch

### Drain Valve

### System Sensor

### Outdoor Air Sensor

### Inlet & Outlet Temperature Sensors

### High-Voltage Terminal Strip

### Low-Voltage Terminal Strip

### Downstream Gas Test Cocks

### 50 psi ASME Relief Valve

### Temperature & Pressure Gauge

### Zero Clearances to Combustible Materials

### 10-Year Limited Warranty (See Warranty for Details)

### 1-Year Warranty on Parts (See Warranty for Details)



Lochinvar, LLC  
300 Maddox Simpson Parkway  
Lebanon, Tennessee 37090  
P: 615.889.8900 | F: 615.547.1000  
f t in y Lochinvar.com

