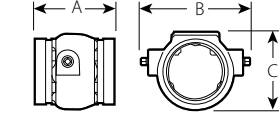


# FireLock® Check Valves

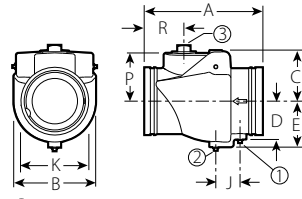
SERIES 717 – cULus, FM, VdS, LPCB

SERIES 717H HIGH PRESSURE – cULus, FM, VdS, LPCB

## DIMENSIONS – Series 717

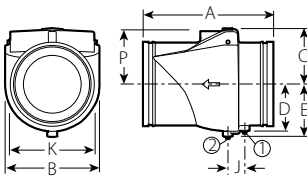


TYPICAL 2½ – 3/65 – 80MM



- ① ½" NPT Upstream Drain
- ② ½" NPT Downstream Drain
- ③ 2" NPT (Drain Optional)

TYPICAL 4 – 8/100 – 200MM

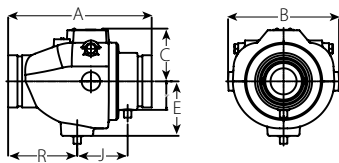


- ① ½" NPT Upstream Drain
- ② ½" NPT Downstream Drain

TYPICAL 10 – 12/250 – 300MM

Size		Dimensions- Inches/millimeters										Approx. Wgt. Ea.
Nominal Size Inches	Actual Outside Diameter Inches	E to E A	B	C	D	E	J	K	P	R	Lbs. kg	
2½	2.875	3.88	4.26	3.57	—	—	—	—	—	—	3.6	
65	73.0	99	108	91	—	—	—	—	—	—	1.6	
76.1 mm	3.000	3.88	4.26	3.57	—	—	—	—	—	—	3.6	
	76.1	99	108	91	—	—	—	—	—	—	1.6	
3	3.500	4.25	5.06	4.17	—	—	—	—	—	—	4.5	
80	88.9	108	129	106	—	—	—	—	—	—	2.0	
4	4.500	9.63	6.00	3.88	2.75	3.50	2.00	4.50	3.50	3.35	20.0	
100	114.3	245	152	99	70	89	51	114	89	85	9.1	
5	5.563	10.50	6.80	4.50	—	4.17	2.15	5.88	4.08	3.98	27.0	
125	141.3	267	173	114	—	106	55	149	104	101	12.3	
139.7 mm	5.500	10.50	6.80	4.50	—	4.17	2.15	5.88	4.08	3.98	27.0	
	139.7	267	173	114	—	106	55	149	104	101	12.3	
6	6.625	11.50	8.00	5.00	—	4.50	2.38	6.67	4.73	3.89	38.0	
150	168.3	292	203	127	—	114	61	169	120	99	17.2	
165.1 mm	6.500	11.50	8.00	5.00	—	4.50	2.38	6.67	4.73	3.89	38.0	
	165.1	292	203	127	—	114	61	169	120	99	17.2	
8	8.625	14.00	9.88	6.06	5.05	5.65	2.15	8.85	5.65	5.75	64.0	
200	219.1	356	251	154	128	144	55	225	144	146	29.0	
10	10.750	17.00	12.00	7.09	5.96	6.69	2.15	10.92	6.73	—	100.0	
250	273.0	432	305	180	151	170	55	277	171	—	45.4	
12	12.750	19.50	14.00	8.06	6.91	7.64	2.51	12.81	7.73	—	140.0	
300	323.9	495	356	205	176	194	64	925	196	—	63.5	

## DIMENSIONS - Series 717H



TYPICAL 2"/60.3 mm – 3"/88.9 mm

Size		Dimensions- Inches/millimeters									Approx. Wgt. Ea.
Nominal Size Inches		A	B	C	D	E	J	K	P	R	Lbs. kg
2	8.66	6.46	3.23	1.48	3.02	2.80	—	—	4.25	10.7	
60.3	219.8	164.1	82.1	37.5	76.7	71.0	—	—	108.0	4.9	
2½	9.37	6.94	3.31	1.66	3.40	3.38	—	—	4.38	13.8	
73	238.0	176.3	84.1	42.2	86.4	85.9	—	—	111.3	6.3	
76.1 mm	9.37	6.94	3.31	1.66	3.40	3.38	—	—	4.38	13.8	
	238.0	176.3	84.1	42.2	86.4	85.9	—	—	111.3	6.3	
3	9.62	7.44	3.53	1.91	3.65	3.38	—	—	4.63	20.0	
88.9	244.3	189.0	89.7	48.5	92.7	85.9	—	—	117.6	9.1	