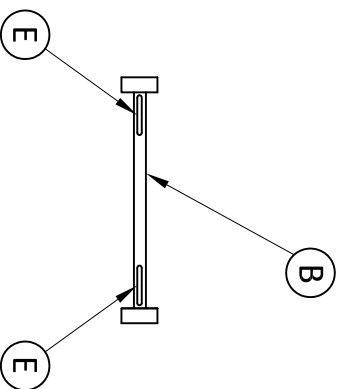


PARTS LIST

- (A) U-Bar (MS107)
- (B) Spacer Bar and Saddle - Wide (MS109)
- (C) 3"X3" Foot Plate w/ Rubber Pad
(Attached to U-Bar)
- (D) Splice Bar (MS106)
- (E) $\frac{3}{8}$ "-16 x $\frac{1}{2}$ " Galvanized Hex Bolt w/Nut,
Galvanized Steel Washers, Galvanized
Split Washer, and Rubber Washers
- (F) Stainless Steel Hex Head Self-Drilling
#10 x $\frac{1}{2}$ " Screw
- (G) $\frac{1}{4}$ "-20 x $\frac{1}{2}$ " Galvanized Hex Bolt



PARTS LIST

"MINI-SPLIT 12"

ADJUSTABLE STAND - WIDE
MODEL NO. QSMS1201

www.quick-sling.com
email: info@quick-sling.com
fax: 1-(800)-699-0423

Quick Sling, LLC
391 W. Water Street
Taunton, MA 02780
1-(800)-699-0543