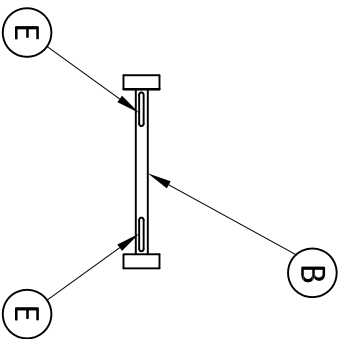


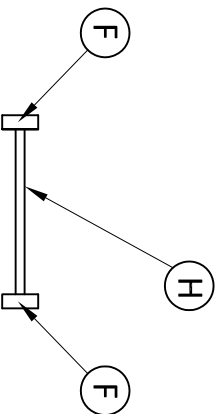
PARTS LIST

- (A) U-Bar (MS110)
- (B) Spacer Bar and Saddle - Thin (MS108)
- (C) 3"X3" Foot Plate w/ Rubber Pad (Attached to U-Bar)



- (D) Adjustment Bar (MS106)

- (E) $\frac{3}{8}$ "-16 x $\frac{1}{2}$ " Galvanized Hex Bolt w/Nut, Galvanized Steel Washers, Galvanized Split Washer, and Rubber Washers



- (F) Stainless Steel Hex Head Self-Drilling #10 x $\frac{1}{2}$ " Screw

- (G) $\frac{1}{4}$ "-20 x $\frac{1}{2}$ " Galvanized Hex Bolt

- (H) $\frac{3}{4}$ " Stabilizer Arm (MS113)



PARTS LIST

"MINI-SPLIT 18"
ADJUSTABLE STAND - THIN
MODEL NO. QSM51800

www.quick-sling.com
email: info@quick-sling.com
fax: 1-(800)-699-0423

Quick Sling, LLC
391 W. Water Street
Taunton, MA 02780
1-(800)-699-0543