



EliteXL®

COMMERCIAL HIGH EFFICIENCY CONDENSING BOILER



FEATURES:

4 pass heat exchanger with large internal circuits reduces pressure drop, allowing the unit to be used in variable flow system

Durable **316L stainless steel** construction pressure rated at 160 PSI bears the ASME Stamp (H)

Combustion System - **10 to 1** turndown

Three Pump Control - System, Boiler & DHW

7" High Resolution Touchscreen Display

Cascade sequencing up to **8 boilers** – Redundancy of operation (no downtime) – providing a much larger turndown ratio while increasing overall system efficiency and performance with unit runtime rotation

HTP LINK - WiFi solution enables remote monitoring of the appliance and system

Direct vent up to 150 feet (1,500,000 to 2,000,000 Btuh Units) and up to 125 feet (399,000 to 1,000,000 Btuh Units) using PVC, CPVC, Polypropylene or Stainless Steel

7 Sizes from
399,000 to 2,000,000 Btuh

97% Thermal Efficiency

Ultra-Low NOx Operation

HTP LINK

Power You Can Depend On

EliteXL[®]



399,000 &
500,000 Btuh

650,000 • 800,000
& 1,000,000 Btuh

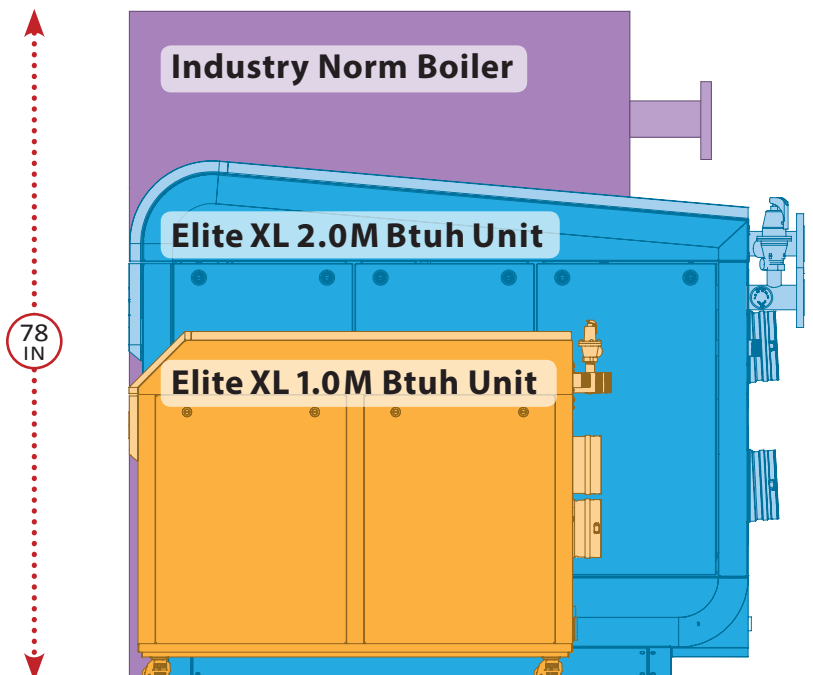
1,500,000 &
2,000,000
Btuh*

*2,000,000 Btuh Model Shown

7 Sizes: 399,000 Btuh to 2,000,000 Btuh

Contractor Approved Sizing!

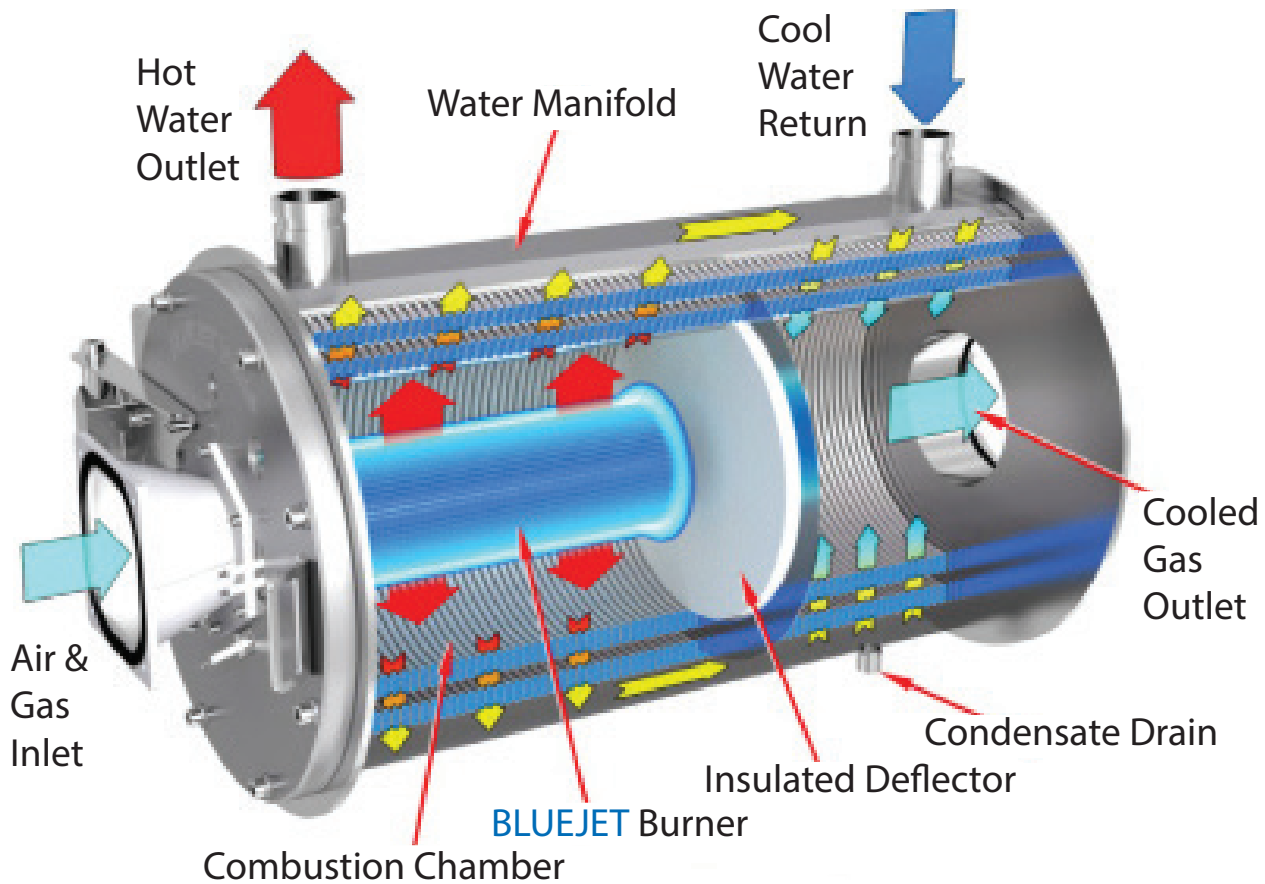
Space should never be compromised to obtain a desired output. The HTP high efficiency Elite XL Boiler was engineered with contractor accessibility in mind. This powerful boiler has a 4 pass heat exchanger designed to increase heat transfer while allowing for a small footprint. Compared with the industry norm, the Elite XL's size advantage makes installation in smaller spaces a reality.



The Industry Norm VS Our 2 Million Btuh Unit VS Our 1 Million Btuh Unit

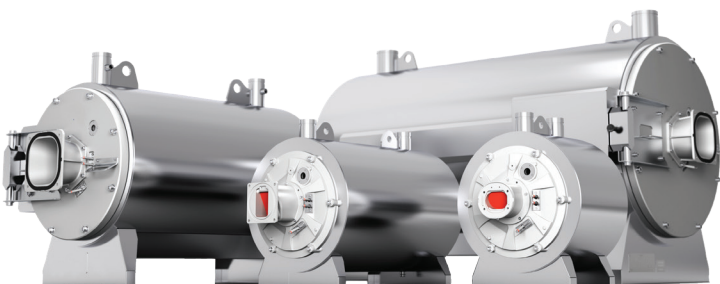
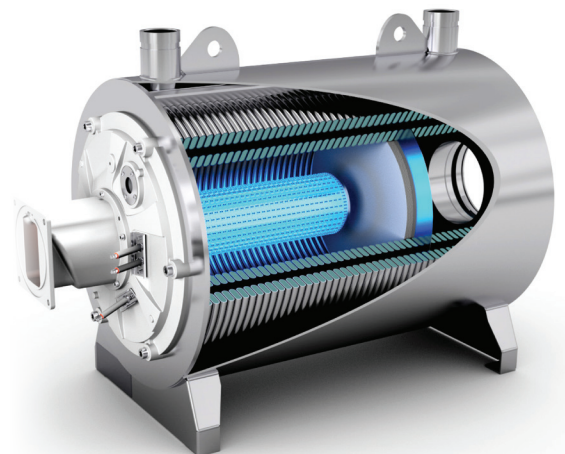
EliteXL[®]

A CLOSER LOOK



Why BLUEJET?

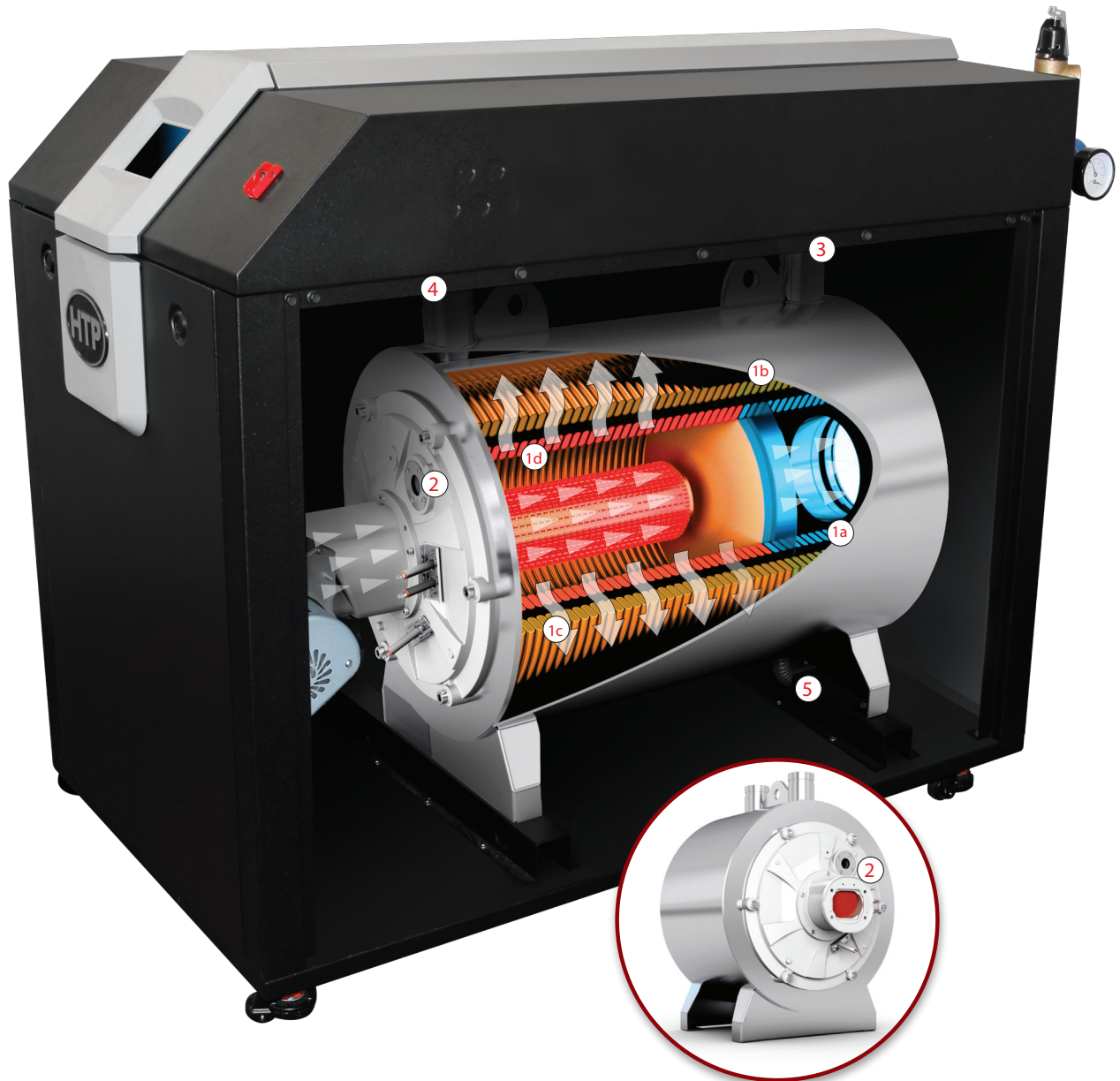
Patented Blue Jet Combustion burner technology, low NOX operation and a unique design provide a uniform stable flame for years of trouble-free operation, while avoiding clogging and hot spots normally seen on other premix burners.



- Highest Quality Stainless Steel Heat Exchanger
- The Highly Efficient 4 Pass Heat Exchanger Design Multiplies the Heat Transfer
- Reduced Pressure Drop Allows Variable Flow Systems to be Used, Reducing Installation Cost of Primary / Secondary System

EliteXL[®]

A LOOK INSIDE



1

The 4 Pass Heat Exchanger Design Multiplies the Heat Transfer:

1a - The hydronic heating fluid-return makes the 1st pass, heating up, in the inner stainless steel tubes of the condensing chamber.

1b - The hydronic heating fluid makes the 2nd pass, picking up even more heat in the outer-tubes of the exhaust chamber.

1c - The hydronic heating fluid makes the 3rd pass, multiplying the heat in the outer-tubes of the burner chamber.

1d - The hydronic heating fluid makes the 4th and final pass, on the hydronic supply, maximizing the heat in the inner-tubes of the burner chamber.

2

Burner Sight Glass

3

Hydronic Return

4

Hydronic Supply

5

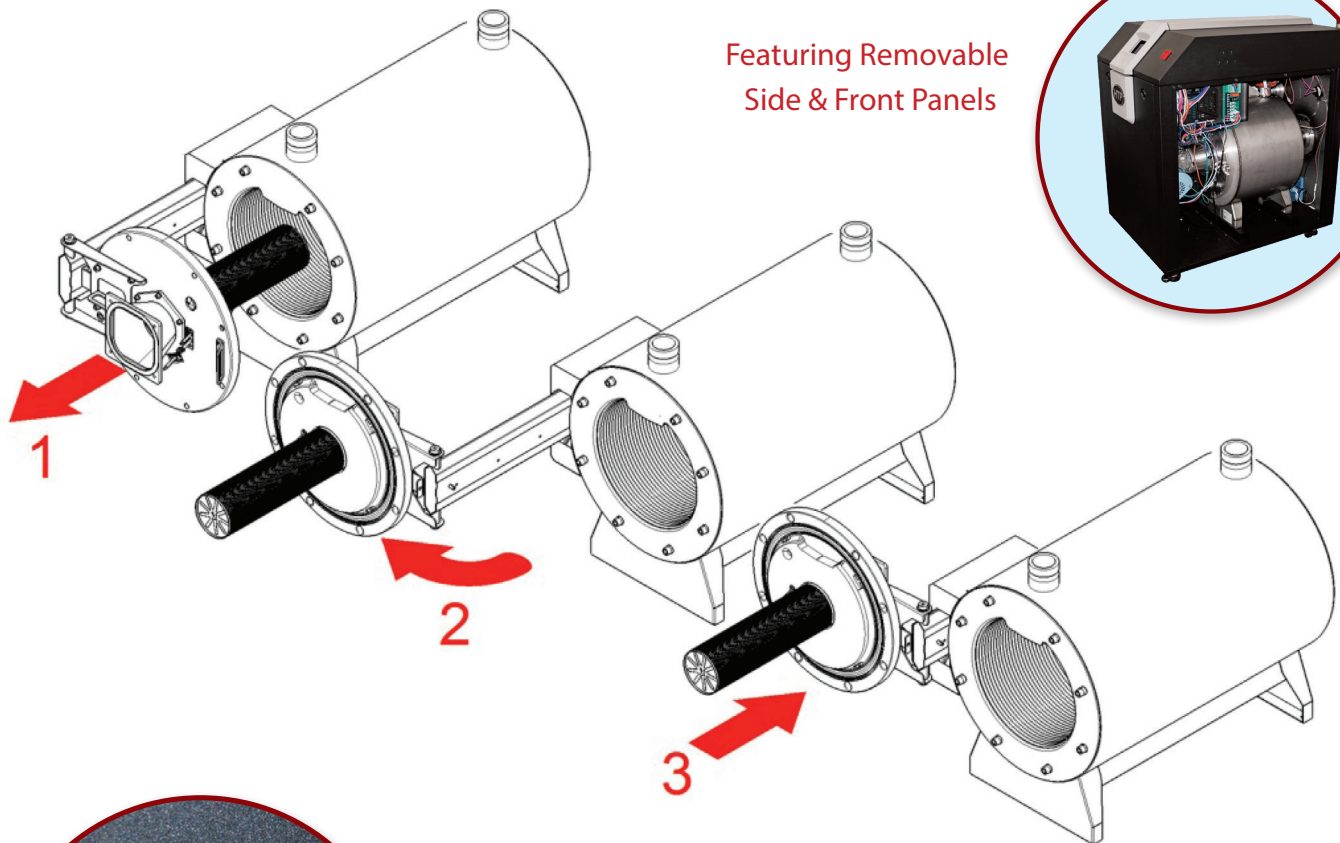
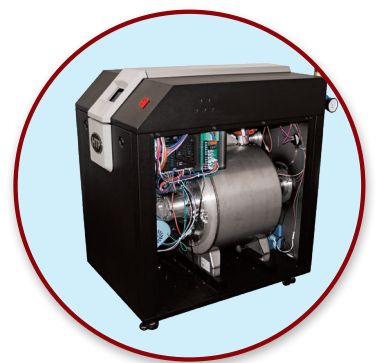
Condensate Drain

MAKING SERVICEABILITY EASIER

Our talented team of design engineers oversaw every aspect of the Elite XL. 1,500k to 2,000k Btuh models include a combustion assembly with a unique hinged sliding door, which is ideal for complete access when maintenance is necessary. In 3 easy steps the combustion assembly is accessible. Simply slide, swing and secure.



Featuring Removable Side & Front Panels



1. Slide 2. Swing 3. Secure



Moves Easily

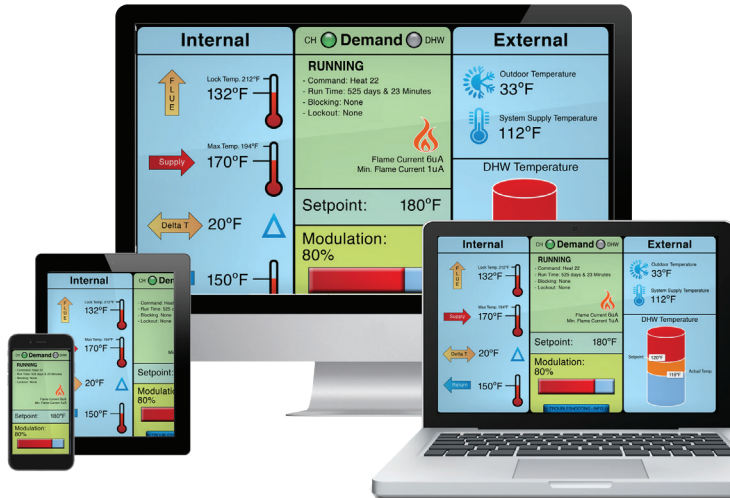
Footmaster wheels on the 399K - 1,000K models eases moving the boiler and locking it in place

HTP LINK

Multiple Platforms on the Cloud

Technical Support

Remotely link to a factory technician to assist in system monitoring, troubleshooting and overall system efficiency.



Building / Property Manager

Remotely link to monitor multiple units in multiple locations. Get text and email alerts to critical system events such as faults. Continuous system monitoring optimizes system performance and efficiency.



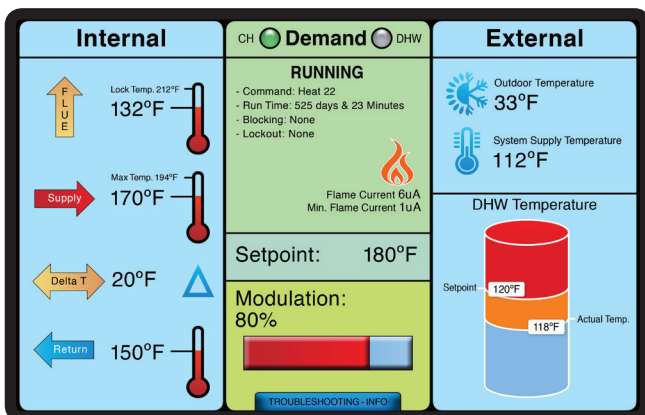
Contractor / Maintenance

Receive text and email notifications and remotely link to assist the customer with system issues. Get key information to quickly and efficiently troubleshoot before arriving on the job.



The HTP Link Touch Display

Take Total Control of Your Heating System



Each boiler comes with a **High Resolution Touchscreen**

TOUCHSCREEN DISPLAY

7" High Resolution color touchscreen display provides clear visual monitoring of the unit's parameters and programming to maximize the efficiency of the unit. Display screen color will change to help clearly identify the status of the unit, making monitoring and troubleshooting easy.

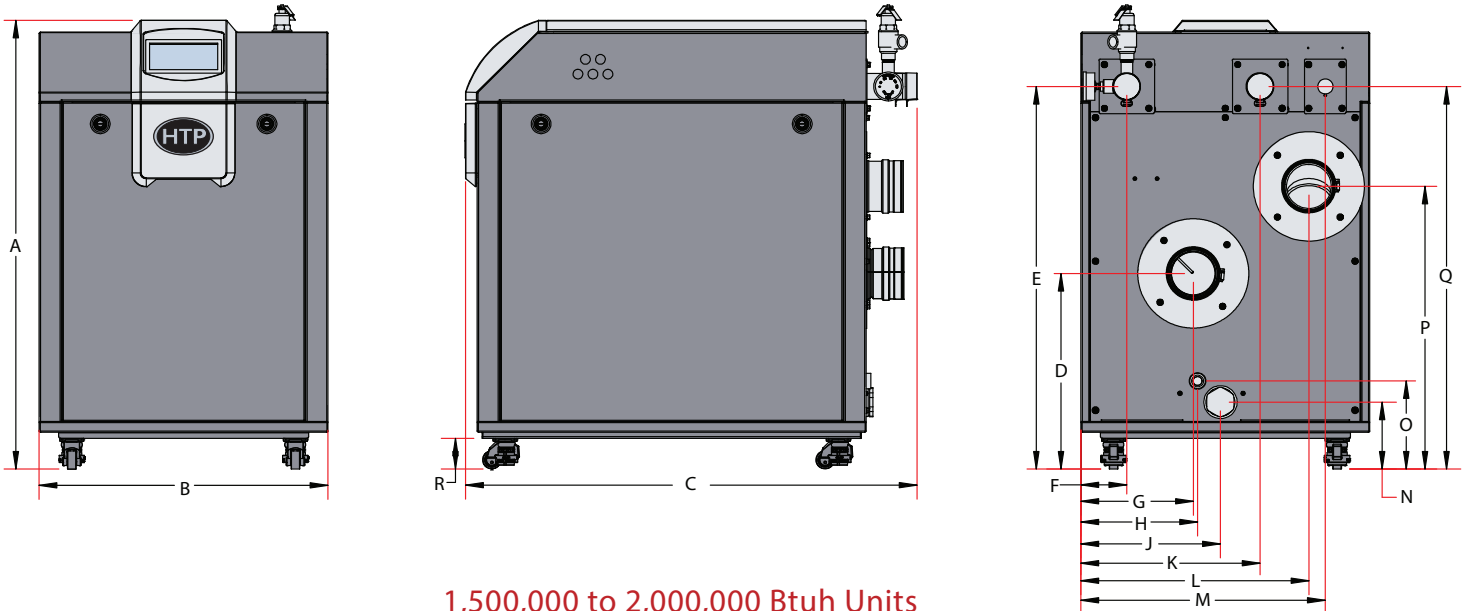
- Stand-By/Running (Green Color)
- Fault (Red Color)
- Blocking Code (Yellow Color)

Model Number	Input Max (MBH)	Input Min (MBH)	Turndown	TE %	Water Pressure Drop (Ft-Hd)/Flow (GPM)				
					40 F ΔT	30 F ΔT	20 F ΔT		
ELX-400FBN	399	39	10:1	97	4 Ft @ 19 GPM	7.2 Ft @ 26 GPM	12 Ft @ 39 GPM		
ELX-500FBN	500	50	10:1	97	3.2 Ft @ 24 GPM	5.4 Ft @ 32 GPM	11.4 Ft @ 48 GPM		
ELX-650FBN	650	65	10:1	97	4 Ft @ 31 GPM	6.2 Ft @ 42 GPM	11.5 Ft @ 63 GPM		
ELX-800FBN	800	80	10:1	97	3 Ft @ 39 GPM	6 Ft @ 52 GPM	12 Ft @ 77 GPM		
ELX-1000FBN	1000	100	10:1	97	4.7 Ft @ 48 GPM	7 Ft @ 64 GPM	14 Ft @ 96 GPM		
ELX-1500FBN	1500	150	10:1	97	4.7 Ft @ 73 GPM	7.6 Ft @ 97 GPM	16 Ft @ 146 GPM		
ELX-2000FBN	2000	200	10:1	97	6.7 Ft @ 100 GPM	11.5 Ft @ 133 GPM	21 Ft @ 200 GPM		
Model ELX-			400FBN	500FBN	650FBN	800FBN	1000FBN	1500FBN	2000FBN
Installation			Indoor, Floor Standing, Fully Condensing						
Minimum / Maximum Input (Btu/Hr)			39,900 / 399,000	50,000 / 500,000	65,000 / 650,000	80,000 / 800,000	100,000 / 1,000,000	150,000 / 1,500,000	200,000 / 2,000,000
Heating Capacity (MBH)			387	485	630	776	970	1,455	1,940
Flue System			Category IV, Sealed Combustion Direct Vent, Power Vent						
Minimum Combined Vent Run			10 feet					15 feet	
Maximum Combined Vent Run			4" (125 feet)		6" (125 feet)			8" (150 feet)	
Approved Exhaust Vent Materials			PVC, CPVC, PP, Stainless Steel						
Packaging Dimensions (in Inches)	W		32.25				43.25		
	H		49.625						
	D		48		64		76	86	
Shipping Weight (lbs)			538	545	680	700	745	1400	1750
Gas Supply Pressure			3.5" to 14" WC (NG or LP)				3.5" to 10.5" WC (NG ONLY)		
Manifold Pressure	Min / Max		NG/LP: -0.08"WC				NG: -0.07"WC		
Power Supply			120V 60 Hz, 21.3A						208/3PH WYE, 60Hz, 15A/Leg
Customer Connection Board Fuse Amperage Ratings			2 Amps						5 Amps
General Operating Conditions			Ambient Temperature Range: 33 – 104°F (0.6 – 40°C) Product Approvals and Requirements: ANSI Z21.13 / CSA 4.9, CSD-1 ASME Code						
Ignition System			Direct Electronic Spark Ignition / Flame Rectification						
Burner System			Premixed Fuel Modulation / Stainless Steel Burner						
Gas Valve System			Pneumatic Gas Valve						
Dimensions (in Inches)	W		26				31.8		
	H		41						
	D		40.7		56.5		66.5	79	
Boiler Water Content (Gallons)			3.8	4.3	5.6	6.6	8.1	12.9	16.25
Minimum Flow Rate @ 20°F ΔT at Low Fire (GPM)			4	5	6.5	8	10	15	20
Flow Switch Activation (GPM)			4				9		
Boiler Setpoint Temperature Range			50 – 190°F / 32 - 190°F (with Outdoor Reset Curve)						
DHW Indirect Setpoint Temperature Range			70 – 185°F						
Water Pressure (PSI)	Heat Exchanger MAWP		160						
	Pressure Relief Valve		50						
Control Panel			7" Full Color Touch Screen						
Main Controller			928 SIT Control						
Connection Sizes	Supply / Return		2" NPT				2 1/2" Flange		
	Gas Inlet		1" NPT		1 1/4" NPT		1 1/2" NPT	2" NPT	
Materials	Cabinet		Powder Coated Galvaneal Steel						
	Heat Exchanger		316L Stainless Steel Water Tube						
Safety Devices			Flame Rectifier Probe, Dual Water Supply Temperature Sensor / High Limit (210°F), Freeze Protection, Condensate Trap with Float, Dual Flue Sensor (210°F), Blocked Vent Pressure Switch, Internal UL 353 Approved Low Water Cut-Off (LWCO), High Resolution Flow Switch						

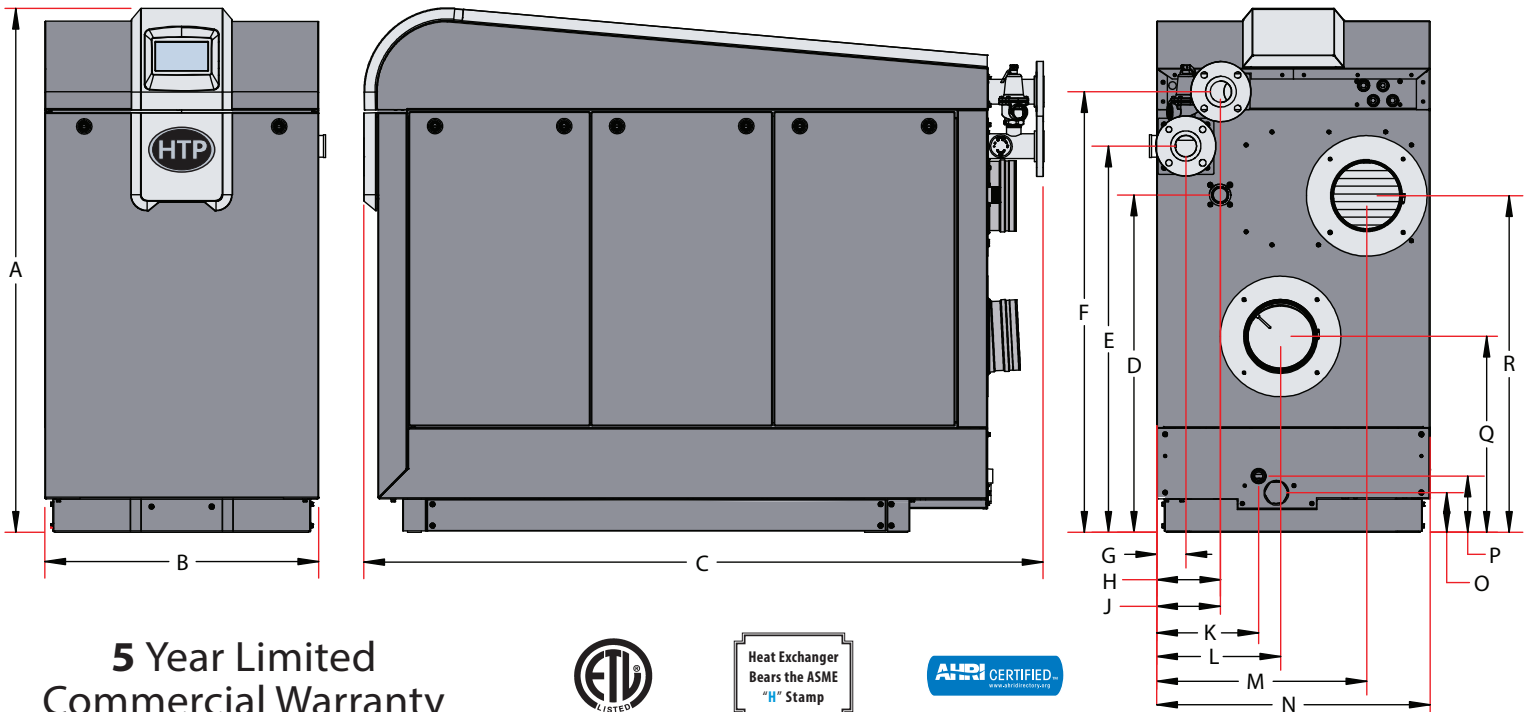
Model	Water Connection	Vent Size	Air Intake	Gas Connection	Condensate
ELX-400FBN - ELX-500FBN	2" NPT	4"	4"	1"	3/4" PVC
ELX-650FBN		6"	6"	1"	
ELX-800FBN - ELX-1000FBN				1-1/4"	
ELX-1500FBN	2 1/2" Flange	8"	8"	1 1/2"	1" PVC
ELX-2000FBN				2"	

Model	A	B	C	D	E	F	G	H	J	K	L	M	N	O	P	Q	R
ELX-400FBN - ELX-500FBN	41.0	26.0	40.7	17.9	35.0	4.1	10.1	10.5	12.6	16.1	20.5	22.0	6.1	8.1	25.8	35.0	2.8*
ELX-650FBN - ELX-1000FBN			56.5														
ELX-1500FBN	60.8	31.8	66.5	39.2	44.8	51.2	3.4	7.4	7.5	11.9	14.4	24.4	31.8	4.6	6.5	22.7	39.1
ELX-2000FBN			79.0														

399,000 to 1,000,000 Btuh Units



1,500,000 to 2,000,000 Btuh Units



5 Year Limited Commercial Warranty

