

Fuel Oil Filters

77FW / 77FW-BG / 99FW / F80-1W



77FW & 77FW-BG

The 77FW and 77FW-BG are the perfect fuel filters for oil fired heating appliances used in small to average sized homes and commercial buildings. They are ideal for final filtration in central fuel oil distribution systems. Either models may be used in one or two-pipe systems.



99FW

The 99FW is perfect for oil fired furnaces in larger homes and commercial buildings. It may be used in one or two-pipe systems. Its large dirt capacity makes the Model 99FW ideal where heavy contamination of oil causes premature clogging of smaller filters.

77FW | 77FW-BG | 99FW Fuel Oil Filters feature:

- Leakproof construction with machined gasket seat and UL listed gasket compounds
- High quality wool felt filter elements that remove all solid contaminants
- Iron and steel construction for maximum integrity and durability
- Low pressure drop, suitable for gravity flow and one or two pipe systems on pressure type burners
- Micronic filtration suited to the smallest oil burner nozzle
- Bonding treatment of center core in filter element eliminates lint
- Step design element offers largest dirt capacity with true depth filtration
- Listed by Underwriters' Laboratories
- 77FW-BG is compatible with fuel oil including B100 biofuel complying with ASTM standard D396-09

Specifications			
	MODEL 77FW	MODEL 77FW-BG	MODEL 99FW
Height	5-1/8"	5-1/8"	6-1/4"
Working Pressure	40 P.S.I.	40 P.S.I.	40 P.S.I.
Yield Pressure	200 P.S.I.	200 P.S.I.	200 P.S.I.
Firing Rate – #2 Fuel Oil	10 G.P.H.	10 G.P.H.	25 G.P.H.
Replacement Element	Pt. No. 88/RF 1	Pt. No. RF-1BG	Pt. No. 101-RF 2
Filter Media	Wool felt (10 Micron)	Microfiber	Wool felt (10 Micron)

F80-1W Fuel Oil Filters feature:

- • Heavy gage canister with Epoxy Coating on the inside—first in the industry!
- • Listed by Underwriters Laboratories
- • UL GPH and pressure ratings EXCEED comparable OEM filters
- • 360° screwdriver slot makes disassembly for element changing easy



Specifications			
MODEL	GPH	PSI	REPLACES
F80-1W	30	52	FULFLO FB4
Replacement Element			RF-4W

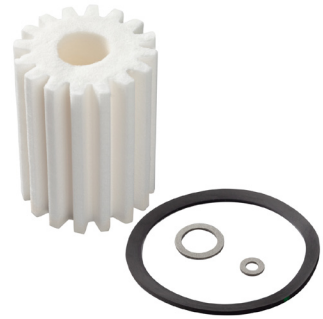
Fuel Oil Filter Refill Cartridges

88-CRW / 101W / RF-1W / RF-2W / RF-4W



88-CRW and 101W Series feature:

- High quality wool felt filter elements that remove all solid contaminants
- Crafted with special “step design” wool felt
- Step design element offers largest dirt capacity with true depth filtration
- Special center core bond treatment eliminates line
- Micronic filtration suited to the smallest oil burner nozzle
- For Models 77FW, 77FW-BG, and 99FW, they offer unsurpassed quality and dependability
- Bio Fuel capable up to B20 blend



RF-1W, RF-2W and RF-4W Series feature:

- Crafted with quality from continuous spun Rayon fibers
- Exclusive gear tooth design for maximum surface area
- Enhanced depth filtration
- •6-tooth gear design of the RF-Series rayon elements provides exceptional performance
- The RF-Series has a third more surface area
- The RF-Series has 20% more volume than the competitive product
- RF-1W is UL-Listed for the 1A-25A/Unifilter 77
- RF-2W is listed for the 2A-700A/99
- RF-4W is designed to fit other filter brands
- Bio Fuel capable up to B20 blend

RF-1W Series Specifications

Surface Area	52 Sq. In.
Volume	12 Cu. In.
Firing Rate	10 GPH
Clean Pressure Drop	0.4 In. Hg.
Ending Pressure Drop	10.0 In. Hg.
Dirt Capacity (Test Contaminant)	1.4 Oz.
Filtration Depth	Medium

PurePro Cartridge Cross Reference Chart

Replacement Elements	Will Fit
88-CRW or RF-1W	F.W. Webb 77W, General 1A-25A, Unifilter 77, Sears 8055, Sid Harvey XF-25/264, Mitco 264, AutoFlo F-300, Federal A-77 and Westwood S-254
101W or RF-2W	General 2A-700A, Unifilter 101, Sid Harvey XF-1/265, Mitco 265, AutoFlo F-400 and Westwood S-254, F.W. Webb 99W
RF-4W	Fulflo B4, AS4, & FB4 and Westwood S-254
101W or RF-2W	General 2A-700A, Unifilter 101, Sid Harvey XF-1/265