

Advantage® Gas-Fired Water Boiler

PurePro®

ADVANTAGE® CAST IRON BOILERS

Features

- A rugged cast-iron heat exchanger design
- Available in seven sizes
- Electronic vent damper
- Integral draft hood
- Taco 007e ECM circulator
- ASME safety relief valve
- Supply manifold
- T&P gauge
- Flame roll out switch
- Blocked vent switch
- Fuel Smart HydroStat® 3200 control
 - Temperature Limit Control: Designed for cold start boilers
 - Low Water Cut-Off: Provides protection against potentially dangerous low water conditions
 - Boiler Reset Control: Utilizes Thermal Targeting™ technology to conserve fuel by monitoring heating demand and establishing target boiler temperatures below the high limit setting
- Optional outdoor reset with sensor part #48-140
- Stainless steel burners
- USA made
- Limited lifetime warranty



Propane and
Natural Gas

With inputs from 70,000
to 280,000 BTU/hour.

The PurePro® Advantage® Gas boiler is a residential, cast-iron, gas-fired water boiler designed for atmospheric draft into a conventional chimney. It is available with inputs from 70,000 to 280,000 BTU/hr. and is available for use with natural or LP gas.

The Advantage sets the standard for installer-ready gas fired boilers. With its limited lifetime warranty, the Advantage comes standard with intermittent ignition, a Taco 007e ECM circulator and HydroStat 3200 control which combines temperature limit control, low water cut-off, and boiler reset in one easy-to-use control. This user-friendly control is easily accessible, making the Advantage gas boiler simple to install and service. The integral draft diverter provides a low profile design, allowing the boiler to be installed in areas with low clearance.

Abundant, Rapid Hot Water Heating

PurePro offers a complete line of indirect water heaters to complement the Advantage boiler. By utilizing the boiler as its heat supply, the burner fires only when necessary and transfers heat from the boiler to the water heater through a highly efficient heat exchanger.



Ratings and Specifications

Model # (Chimney Vent)	Input (MBH)	Heating Capacity (MBH)	Net AHRI Rating (MBH)	AFUE	Dimensions	Vent	Gas NPT	Water Content (gal.)	Boiler Weight (lbs.)
AG3-HN (HP)	70	59	51	84%	W-14", H-40", D-32"	4"	1/2"	2	180
AG4-HN (HP)	105	88	77	84%	W-16", H-40", D-32"	5"	1/2"	3	231
AG5-HN (HP)	140	117	102	84%	W-19", H-40", D-32"	6"	1/2"	4	284
AG6-HN (HP)	175	146	127	84%	W-22", H-40", D-32"	6"	1/2"	5	332
AG7-HN	210	176	153	84%	W-25", H-40", D-32"	7"	3/4"	6	332
AG8-HN	245	205	178	84%	W-28", H-40", D-32"	7"	3/4"	7	438
AG9-HN	280	234	203	84%	W-31", H-40", D-32"	8"	3/4"	8	484

All models certified for use from sea level to 2,000' & shipped with 30 psi relief valve, MAWP is 50 psi
Supply/Return piping connections are 1.25" all sizes

HN = Natural Gas, HP = Propane Gas

AG7 thru AG9 HP (propane) requires a propane conversion kit



Conversion Kit: Natural to LP

Mfr. #	Description
PRO104390-01	Natural to LP Kit AG3-AG6
PRO112400-01	Natural to LP Kit AG7-AG9
PRO108220-01	LP to Natural Kit AG3-AG6
PRO112399-01	LP to Natural Kit AG7-AG9

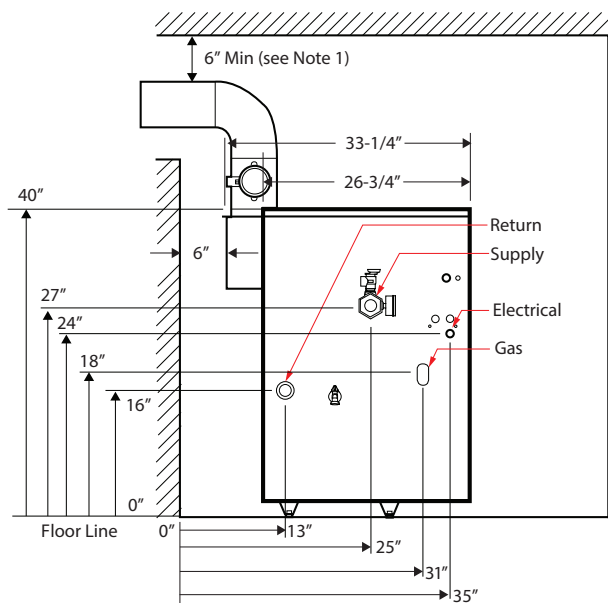
Model	A	B
AG3	14"	6.42"
AG4	16"	7.70"
AG5	19"	9.23"
AG6	22"	10.76"
AG7	25"	6.42"
AG8	28"	7.70"
AG9	31"	9.23"

Constructed and tested in accordance with ASME Boiler Code, Section IV.
A limited lifetime warranty is provided for the cast iron heat exchanger.



- Specifications and dimensions are subject to change without notice.
- Net AHRI Water Ratings shown based on piping and pickup allowance of 1.15.
- Consult manufacturer before selecting boiler for installations having unusual piping and pickup requirements, such as intermittent system operation, extensive piping systems, etc.

LEFT SIDE VIEW



FRONT VIEW

