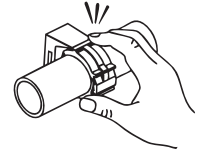




PurePro Click Hangers are a high performance system to support pipe, tubing, conduit, cable, and more. These Click Hangers can be mounted to all types of surfaces.

Push-To-Lok



System

Features

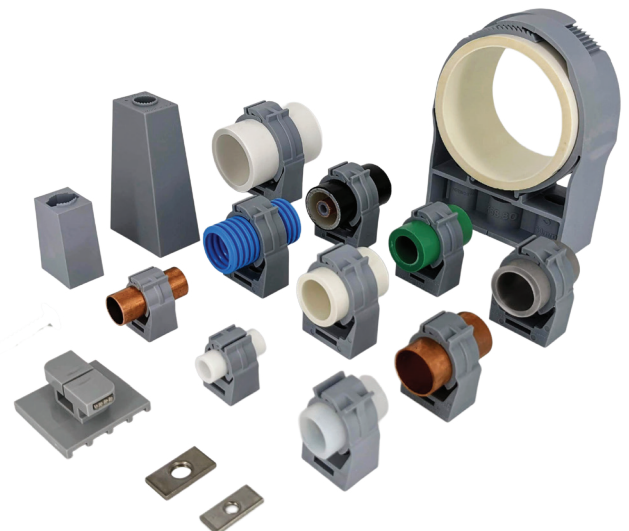
- Non-metallic
- Non-corrosive
- UV Resistant
- Sizing from 1/4" to 4"
- UL and IAPMO Listed
- Installs quickly.
- Versatile
- Allows for expansion and contraction of piping systems.
- Adapts easily to strut and Threaded Rod
- **Made in the USA**

Installation options include, but are not limited to:

- Wood
- Steel
- Concrete
- Masonry
- Unistrut
- Threaded Rod

Compatible with all kinds of pipe and tubing, including:

- Copper Tubing
- PEX Tubing
- PP Piping
- PVDF
- Electrical Conduit
- PVC Schedule 40/80
- CPVC
- Stainless Tubing
- Iron Pipe
- Armored Cable



Made In USA



Conduit and
Cable Hardware
E362799



PurePro®, Londonderry, NH 03053
fwwebb.com/purepro

Sizing and Applications

SKU	Size Range (inches)		Applications		Flange (Threaded Rod Adapter)
	Min	Max	IPS	CTS	
PRO38CLICK	0.47	0.56	1/4"	3/8"	F1225-14 1/4-20 thread
PRO12CLICK	0.59	0.66		1/2"	F1225-14 1/4-20 thread
PRO58CLICK	0.67	0.75	3/8"	5/8"	F1225-14 1/4-20 thread
PRO34CLICK	0.87	0.90		3/4"	F1225-14 1/4-20 thread
PRO34IPSCCLICK	0.98	1.09	3/4"		F1225-14 1/4-20 thread
PRO1CLICK	1.10	1.23		1"	F2859-14 1/4-20 thread
PRO114CLICK	1.25	1.40	1"	1-1/4"	F2859-14 1/4-20 thread F3259-38 3/8-16 thread
PRO112CLICK	1.57	1.71	1-1/4"	1-1/2"	F2859-14 1/4-20 thread F3259-38 3/8-16 thread
PRO2CLICK	1.85	2.00	1-1/2"		F2859-14 1/4-20 thread F3259-38 3/8-16 thread
PRO2IPSCCLICK	2.32	2.52	2"		F2859-14 1/4-20 thread F3259-38 3/8-16 thread
PRO3IPSCCLICK	3.15	3.54	3"		F71113-38 3/8-16 thread F71113-12 1/2-13 thread

*Other sizes available upon request.

Accessories

Flanges	Strutcatchers	Spacers
		
Adapts to threaded rod 1/4-20 3/8-16 1/2-13	Easy and secure installation onto unistrut.	Standoffs available in 1.77" and 3.35"

*All installations must meet local building codes.



PurePro®, Londonderry, NH 03053
fwwebb.com/purepro