

### GENERAL

Fully recessed barrier-free stainless steel water cooler has recessed in-the-wall refrigeration system and stainless steel grill. All stainless steel polished to a lustrous satin finish.

Fountain has contoured basin to minimize splashing. Flexi-Guard® safety bubbler and easy to operate, fully functional stainless steel, vandal-resistant front push bar with raised letters to aid the visually impaired. Flow regulator provides constant stream from 20 to 105 psi water pressure. Vandal-resistant bottom cover plate.

Energy efficient refrigeration system utilizes a combination tank continuous-tube type evaporator, refrigerant drier, capillary tube, and all copper construction.

**THIS WATER COOLER COMPLIES WITH THE REQUIREMENTS OF A.D.A. (AMERICANS WITH DISABILITIES ACT) WHEN PROPERLY INSTALLED.**

### NO LEAD DESIGN

**THIS WATER COOLER COMPLIES WITH THE LEAD-FREE DEFINITION IN THE SAFE DRINKING WATER ACT OF 1986 AND LEAD CONTAMINATION CONTROL ACT OF 1988.**

Elkay Water Coolers are manufactured with a waterway system utilizing copper components and completely lead-free material. These waterways have no lead because all lead materials, such as leaded brass, have been removed. All joints are brazed using silver solder only. No lead solder is permitted. A strainer with an easily cleanable screen is provided to allow trapping and convenient removal of waterborne particulate of 140 microns or larger prior to their entry into the water cooler.

### CAPACITIES CHART

Model Number	Base Rate	**GPH of 50°F Drinking Water				Rated Watts	Full Load Amps	Compr. HP	Glass† Filler Option	Pre-Cooler	Ship. Wt. Lbs.
		Room Temperature °F									
		70°F	80°F	90°F	100°F						
EHFRAM7K	6.9	7.9	7.5	6.9	6.3	380	4.5	1/5	YES	NO	119

\*Based on 80°F inlet water temperature, 90°F room temperature, 50°F drinking water temperature.

†Glass filler available at extra cost. Requires factory preparation to receive glass filler.

Rated watts shown are based on operational (run) time, in accordance with A.R.I. Standard 1010 conditions. Specific applications will determine the actual watts consumed per hour. Watts consumed will be based on number of people served per hour (usage), ambient temperatures, and inlet water temperature.

### COOLING SYSTEM

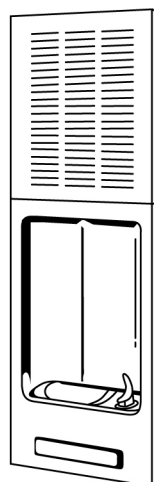
**Motor Compressor:** Hermetically sealed, reciprocating type, 115V, 60 Hz single phase. Sealed-in lifetime oil supply. Equipped with electric cord and three prong molded rubber plug.

**Condenser:** Fan cooled, copper tube with aluminum fins. Fan motor is permanently lubricated.

**Cooling Unit:** Combination tube-tank type. Self Cleansing. Tube portion is continuous coil of copper tubing. Tank is stainless steel. Fully insulated with EPS foam which meets Underwriters Laboratories requirements for self extinguishing material.

**Temperature Control:** Enclosed adjustable thermostat is factory preset. Requires no adjustment other than for altitude requirements.

**Refrigerant Control:** Refrigerant HFC-134a is controlled by accurately calibrated capillary tube for positively trouble-free performance.



Model EHFRAM7K

☐ **Model EHFRAM7K** – Mounting box MB30 is included with each unit.

☐ **Model EHFRA7K** – Used when mounting Box MB30 is pre-ordered for early installation.

### CONSTRUCTION

**Fountain Body:** #16 gauge, type 304 nickel bearing stainless steel polished to a lustrous satin finish with high shined outer edge. Contoured basin offers large strike area to minimize splashing. Support arms incorporate unique recess to accept basins. Fully functional stainless steel push bars are easy to operate and have raised letters to aid visually impaired. Bottom cover plate is vandal-resistant.

**Exclusive Flexi-Guard® Safety Bubbler:** Innovative design utilizes a pliable polyester elastomer to prevent accidental mouth injuries. Flexes on impact, then returns to original position. Strong. Abrasion-resistant. Anti-sweat. Keyed in location to prevent rotation.

**Front Panel Grill.** Made of type 304 stainless steel, polished to a uniform Elkay satin finish. Removable louvered ventilating grille encloses refrigeration unit and plumbing.

**Wall Mounting Box:** MB30 included with each unit. For EHFRA7K MB30 must be pre ordered for installation. Box allows flush mounting to finished wall, plumbing and electrical service holes are pre-punched on both right and left side to facilitate installation.

**Protected by Elkay's 5 Year Limited Warranty** on the refrigeration system of the unit.

Elkay Pressure-Type Water Coolers are designed to operate on 20 psi to 105 psi supply line pressure. If inlet pressure is above 105 psi, a pressure regulator must be installed in the supply line. Any damage caused by reason of connecting this product to supply line pressures lower than 20 psi or higher than 105 psi is not covered by the warranty.

### STANDARDS

 Elkay Electric Air Cooled Water Coolers are listed by Underwriters Laboratories Inc. and comply with both Canadian and U.S. requirements.

These units comply with A.R.I. Standard 1010.

This cooler is certified by WQA to lead-free compliance including **NSF/ANSI 61 and 372.**

In keeping with our policy of continuing product improvement, Elkay reserves the right to change product specifications without notice. Please visit [elkayusa.com](http://elkayusa.com) for most current version of Elkay product specification sheets.

This specification describes an Elkay product with design, quality and functional benefits to the user. When making a comparison of other producers' offerings, be certain these features are not overlooked.

**No Lead  
Fully Recessed Water Cooler  
Barrier-Free Access Models EHFRAM7K and EHFR7K**

**ELKAY®  
ROUGH-IN DIMENSIONS**

**IMPORTANT!**

**INSTALLER PLEASE NOTE:**

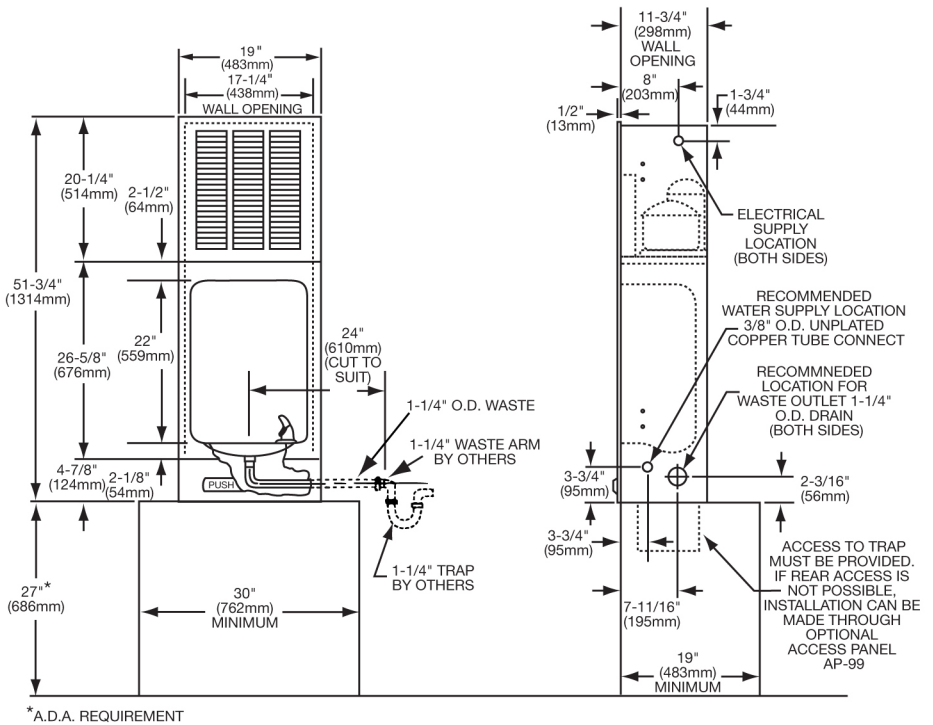
This water cooler has been designed and built to provide water to the user which has not been altered by materials in the cooler water ways.

The grounding of electrical equipment such as telephone, computers, etc. to water lines is a common procedure. This grounding may be in the building but may also occur away from the building. This grounding can cause electrical feedback into a water cooler creating an electrolysis which causes a metallic taste or causes an increase in the metal content of the water. This condition is avoidable by using the proper materials as indicated below.

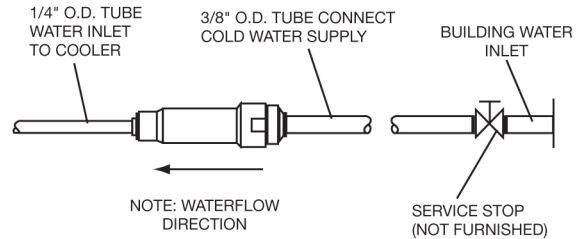
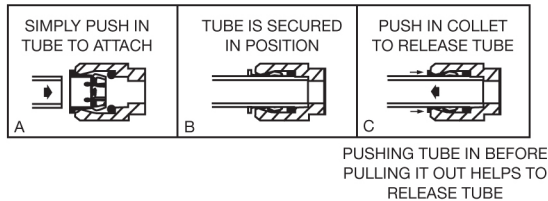
**NOTICE**

This water cooler must be connected to the water supply using a dielectric coupling. The cooler is furnished with a non-metallic strainer which meets this requirement.

The drain fittings which are provided by the installer should also be plastic to electrically isolate the cooler from the building plumbing system.



**OPERATION OF QUICK CONNECT FITTINGS**



**Mounting frame MB30 not included with model EHFR7K**

